

MOTORIZED FLIPPER™

Model 8893 (Optic Dia. 2 Inches)

U.S. Patent #5,737,132

Getting Started

Take the handpad and remove the battery cover on the back. Insert the included 9-V battery (carefully noting polarity) into the battery compartment and replace the cover. Plug the control cable into the "to Flipper" connector on the handpad. Use the switch on the handpad to flip the Flipper up and down.

TTL Input

The Flipper can be controlled using a TTL-compatible signal (5-V high and 0-V low) applied to the edge-sensitive "TTL-in" port on the handpad. A rising edge (low-to-high transition) raises the Flipper while a falling edge (high-to-low transition) lowers the Flipper. A 2.5-mm plug is included that allows you to make your own cable for TTL control.

Since the handpad switch overrides the TTL input, we recommend that you send a rising-edge signal before you start your experiment to verify that the Flipper is in the up position.

Power Source

The Flipper comes with a 9-V battery. This battery is good for 1,000 flips over a 6-month period, or 2,000 flips over a 3-month period. When the 9-V battery runs low, the check battery indicator on the handpad will flash.

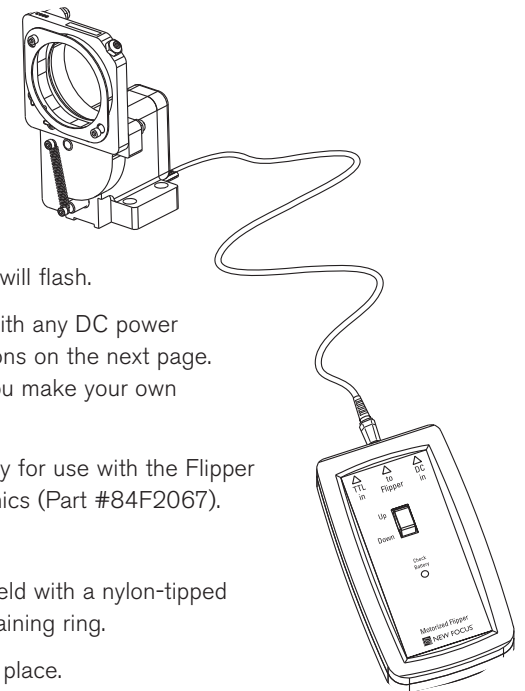
You can also power the Flipper with any DC power supply that meets the specifications on the next page. The included 2.1-mm plug lets you make your own power cable.

A good off-the-shelf power supply for use with the Flipper is available from Newark Electronics (Part #84F2067).

Holding Your Optics

Thicker optics (>6 mm) can be held with a nylon-tipped setscrew or with the included retaining ring.

Thin optics must be adhered into place.



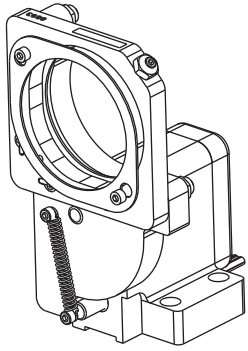
[V] New Focus™
A Newport Company

3635 Peterson Way • Santa Clara, CA • 95054 • USA

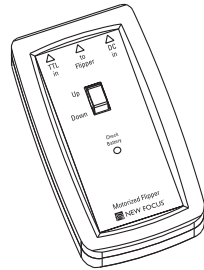
Phone (408) 919-1500 • e-mail: contact@newfocus.com • www.newport.com/newfocus

Document Number 803452 Rev. B

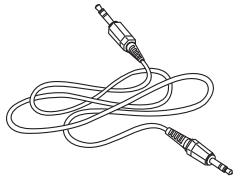
WHAT YOU GET



Motorized Flipper



Flipper Handpad



Cable



9-Volt Battery



2.1-mm Plug for DC Power Input



2.5-mm Plug for DC Power Input

SPECIFICATIONS

Power Supply

Standard:

- 9-V Battery (included with Flipper)
- The low power indicator light blinks when the battery is low

Optional:

- DC IN external power supply:
- 9-VDC power supply
- 300–500 mA
- 2.1-mm plug

Suggested external power supply:
Newark Electronics Part #84F2067

TTL Signal

- Positive edge=up
- Negative edge=down
- Push button overrides TTL signal.
- 2.5-mm plug

Range of Tilt: $\pm 2^\circ$

Number of Flips per Battery:

- 1,000 over a 6-month period, or
- 2,000 over a 3-month period

