

Intelligent Closed-Loop Picomotor™ Controller / Driver Module – 2 Channels



Intelligent Closed-Loop Picomotor™ Controller / Driver Module – 2-Channels

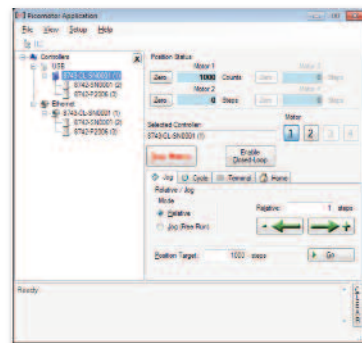
Model 8743 Closed-Loop Picomotor Controller / Driver Features:

- Intelligent 2-axis closed-loop control
- Compact, integrated controller and driver design
- Innovative Picomotor auto-detection technology
- USB 2.0, RS-485, and advanced 10/100 Ethernet connectivity
- Embedded dynamic HTTP server
- Easy to use Windows™ application with advanced device auto-discovery
- LabVIEW™ and Windows™ DLL support
- Newport Motion Control Language (NMCL) command set
- Local ON/OFF Power switch
- CE and ROHS Compliant

Derived from the new Picomotor Modules Family with the most recent addition to the new Picomotor controller/driver family, model 8743-CL is a 2-axis closed-loop intelligent motion controller/driver that provides fine tuning, absolute positioning, compact and low cost solution for driving New Focus closed-loop Picomotors products.

It is a single-box solution that can be manually controlled with the New Focus 8758 hand control pad or computer controlled via USB, RS-485, or Ethernet communication interfaces using the Newport Motion Control Language (NMCL) command set. All three computer interfaces are well supported via Windows™ DLL, sample LabVIEW™ VIs, and intuitive graphical user interface (GUI) Windows™ application with device auto-discovery feature.

Each model 8743-CL controller/driver has two 4-pin RJ-22 single output ports and two 25-pin D connector for the encoder signal that can be used with any single-channel closed loop Picomotor actuator at any given time.



Closed-Loop Picomotor™ Controller / Driver Module – 2 Channels

Picomotor™ Controller / Driver Specifications

Specifications	8743-CL
Number of Channels	2
Maximum Pulse Rate	Up to 2 kHz
Input Voltage (V _{DC})	12 (Nominal), 10.5 to 14.5
Interface	10/100 Ethernet, USB 2.0, RS-485
Power Consumption	11 Watts @ 2 kHz Sustained Speed, 2 Watts Idle
Size	5.45 in x 3.61 in x 1.02 in (148.3 mm x 91.7 mm x 25.8 mm)
Operating Temperature	0°C to 65°C
Storage Temperature	-40°C to 95°C
Weight	0.6 lb (272 g)

Ordering Information

Model	Description
8743-CL-2-KIT	Two-Axis 8743-CL Picomotor™ Controller/Driver Kit
8745-PS	Power Supply, 12V
8745-PWR-CBL	Power Cable, 6 in. Length
8745-USB-CBL	USB Cable, 3 Meters Length
8745-STK-KIT	L-Shaped Stacking Plate Kit
8745-MTG-KIT	Optical Table Mounting Plate Kit
8745-RS485-CBL	RS-485 Cable



3635 Peterson Way, Santa Clara, CA 95054, USA

PHONE: 1-800-222-6440 1-408-980-4300 FAX: 1-408-919-6083 EMAIL: sales@newfocus.com

www.newport.com/newfocus

	PHONE	EMAIL		PHONE	EMAIL
Belgium	+32-(0)0800-11 257	belgium@newport.com	Irvine, CA, USA	+1-800-222-6440	sales@newport.com
China	+86-10-6267-0065	china@newport.com	Netherlands	+31-(0)30 6592111	netherlands@newport.com
France	+33-(0)1-60-91-68-68	france@newport.com	United Kingdom	+44-1235-432-710	uk@newport.com
Japan	+81-3-3794-5511	spectra-physics@splasers.co.jp	Germany / Austria / Switzerland	+49-(0)6151-708-0	germany@newport.com
Taiwan	+886 -(0)2-2508-4977	sales@newport.com.tw			

Newport Corporation, Irvine, California and Franklin, Massachusetts; Evry and Beaune-La-Rolande, France and Wuxi, China have all been certified compliant with ISO 9001 by the British Standards Institution. Santa Clara, California is DNV certified.

Newport Corporation, Global Headquarters
1791 Deere Avenue, Irvine, CA 92606, USA

PHONE: 1-800-222-6440 1-949-863-3144
EMAIL: sales@newport.com

Complete listings for all global office locations are available online at www.newport.com/contact

DS-051301 (5/13)