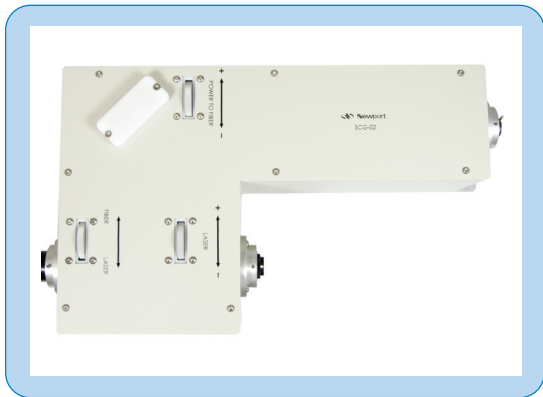


Wavelength Extender



Top View of SCG-02

Features and Benefits

- Manual controls to attenuate fundamental throughput and generate parallel, broadband supercontinuum output
- Preserves beam path and tuning range of pump source
- Designed to work with ultrafast Ti:Sapphire lasers such as Spectra-Physics Mai Tai, Mai Tai DeepSee and Tsunami
- Robust, stable device is factory preassembled and prealigned
- Easily integrated to expand existing spectroscopy and microscopy setups

Applications

- Ultrafast Spectroscopy
- Two Photon Microscopy
- Two Photon FRET
- CARS Microspectroscopy

Newport's SCG-02 Wavelength Extender is a modular solution designed specifically for the generation of supercontinuum with a femtosecond Ti:Sapphire laser such as the Tsunami® or MaiTai® ultrafast oscillator.

Laser input is split into two parallel beams; the fundamental pump and parallel, unfiltered broadband supercontinuum. This flexibility allows for the external selection of particular spectra of interest and the independent use or recombination of both beams. The fundamental beam passes through an integrated attenuator to precisely control output power.

The Newport Wavelength Extender is factory preassembled and prealigned, allowing for quick setup and integration with existing laser sources, spectroscopy and microscopy setups. Factory installation is available.

The Wavelength Extender can be configured to use either the SCG-800 or SCG-800-CARS photonic crystal fiber modules, depending on the specific spectral output desired.

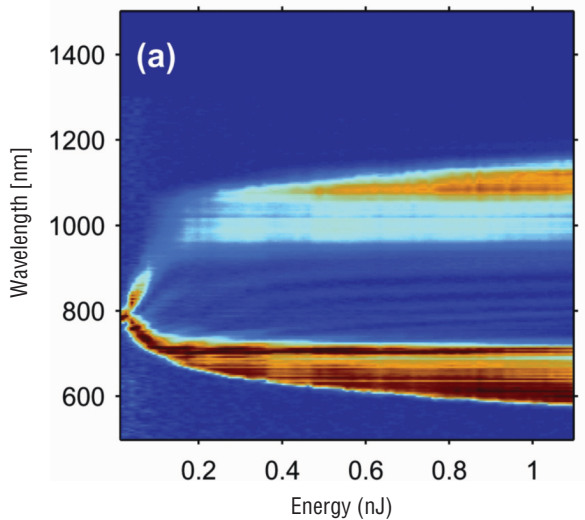
ABOUT NEWPORT'S TECHNOLOGY AND APPLICATIONS CENTER

Newport's Technology and Applications Center (TAC) develops application-specific solutions for our research customers. Current activities of the TAC are focused in the areas of Ultrafast Spectroscopy, Nonlinear Microscopy, Raman Spectroscopy, Ultrafast Micromachining, and Test and Characterization of Photovoltaic Solar Cells. Using in-house expertise and collaborations with key educational institutions, the members of this team develop application solutions, write Application Notes and publish articles in peer reviewed journals. The TAC team has integrated Newport's family of products into a number of stand alone devices and kits.

To learn more about TAC and its activities please visit us on the web at www.newport.com/tac



Wavelength Extender



Left to Right: Spectral Map of SCG-800-CARS Module, SCG-800 Supercontinuum Generation Module

Ordering Information

Model	Description
SCG-02	Wavelength Extender



Newport Corporation, Global Headquarters
1791 Deere Avenue, Irvine, CA 92606, USA

www.newport.com

PHONE: 1-800-222-6440 1-949-863-3144 FAX: 1-949-253-1680 EMAIL: sales@newport.com

Complete listings for all global office locations are available online at www.newport.com/contact

	PHONE	EMAIL		PHONE	EMAIL
Belgium	+32-(0)0800-11 257	belgium@newport.com	Irvine, CA, USA	+1-800-222-6440	sales@newport.com
China	+86-10-6267-0065	china@newport.com	Netherlands	+31-(0)30 6592111	netherlands@newport.com
France	+33-(0)1-60-91-68-68	france@newport.com	United Kingdom	+44-1235-432-710	uk@newport.com
Japan	+81-3-3794-5511	spectra-physics@splasers.co.jp	Germany / Austria / Switzerland	+49-(0)6151-708-0	germany@newport.com
Taiwan	+886 -(0)2-2508-4977	sales@newport.com.tw			

Newport Corporation, Irvine and Santa Clara, California and Franklin, Massachusetts; Evry and Beaune-La-Rolande, France; Stahnsdorf, Germany and Wuxi, China have all been certified compliant with ISO 9001 by the British Standards Institution.

DS-111102