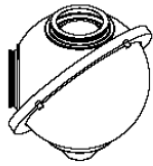
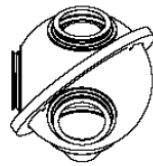


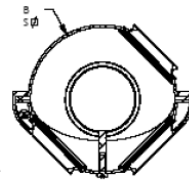
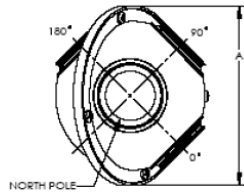
# 4" and 6" Spheres



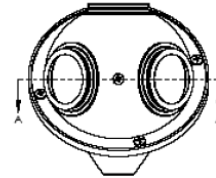
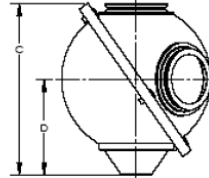
3 PORT CONFIGURATION



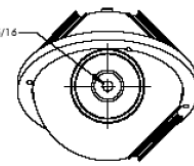
4 PORT CONFIGURATION



SECTION A-A



1/4-20 X 5/16



MOUNTING CONFIGURATION  
3", 4" & 6" SPHERES

P/N	Dimensions (inches)				Port Diameters (inches)			
	A	B	C	D	0 Deg	90 deg	180 deg	North Pole
819D-SF-4	4.62	3.88	4.547	2.481	1.5	1	n/a	1
819C-SF-4	4.62	3.88	4.547	2.481	1.5	1	1	1
819D-SF-6	7.13	5.9	6.673	3.544	2.5	1	n/a	1
819C-SF-6	7.13	5.9	6.673	3.544	2.5	1	1	1