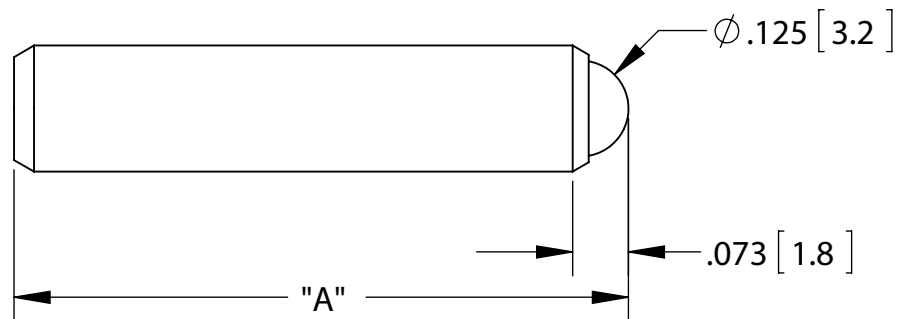


.164-100 UNS-3A
THREAD

5/64 [2] HEX
↓ .12 [3] MIN



MODEL NO.	"A" [IN (MM)]
SW-10E1-3	0.60 (15.2)
SW-10E2-3	0.88 (22.4)
SW-10E3-3	1.16 (29.5)
SW-10E4-3	1.32 (33.5)
SW-10E5-3	2.04 (51.8)
SW-10E6-3	2.50 (63.5)