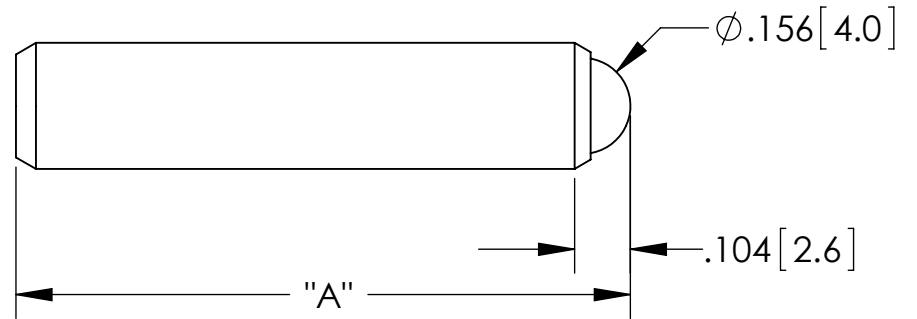
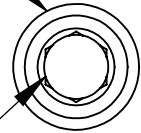


.250-100 UNS-3A
THREAD

5/64 [2] HEX
∇ .12 [3] MIN



MODEL NO.	"A" [IN (MM)]
SW-10Q1-3	0.70 (17.8)
SW-10Q2-3	0.92 (23.4)
SW-10Q3-3	1.12 (28.5)
SW-10Q4-3	1.29 (32.8)
SW-10Q5-3	1.58 (40.1)
SW-10Q6-3	2.10 (53.3)
SW-10Q7-3	3.18 (80.8)