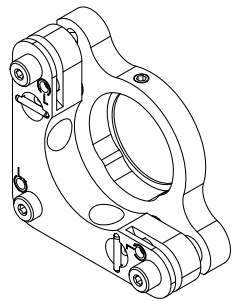
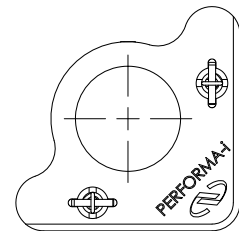


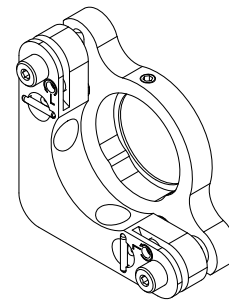
MODEL P100-AI28  
2 X 80TPI DRIVE SCREWS



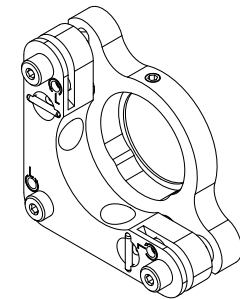
MODEL P100-AI38  
3X 80TPI DRIVE SCREWS



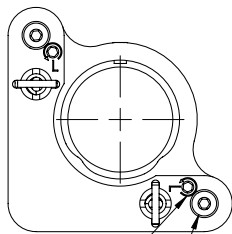
PERFORMA I SERIES MOUNTS



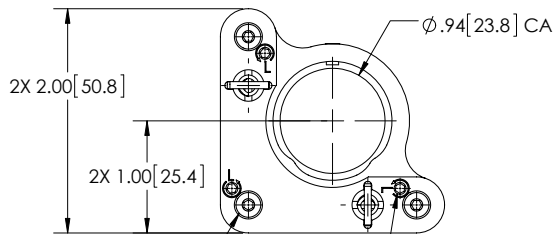
MODEL P100-AI21  
2 X 100TPI DRIVE SCREWS



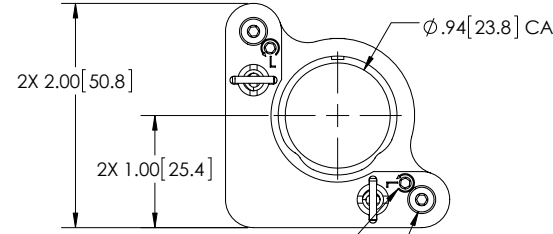
MODEL P100-AI31  
3 X 100TPI DRIVE SCREWS



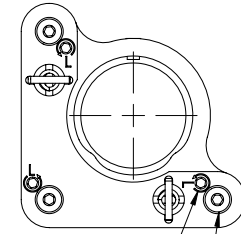
2X 5/64[2.0]  
HEX LOCKING  
2X 80 TPI  
DRIVE SCREWS  
WITH 5/64[2.0] HEX



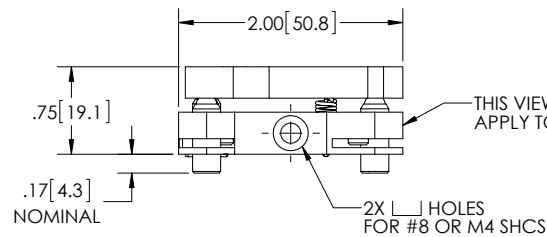
2X 2.00[50.8]  
2X 1.00[25.4]  
3X 80 TPI  
DRIVE SCREWS  
WITH 5/64[2.0] HEX  
3X 5/64[2.0]  
HEX LOCKING



2X 2.00[50.8]  
2X 1.00[25.4]  
2X 5/64[2.0]  
HEX LOCKING  
2X 100 TPI  
DRIVE SCREWS  
WITH 5/64[2.0] HEX



3X 5/64[2.0]  
HEX LOCKING  
3X 100 TPI  
DRIVE SCREWS  
WITH 5/64[2.0] HEX



THIS VIEW DIMENSIONS  
APPLY TO ALL THE I SERIES MODELS

2X HOLES  
FOR #8 OR M4 SHCS