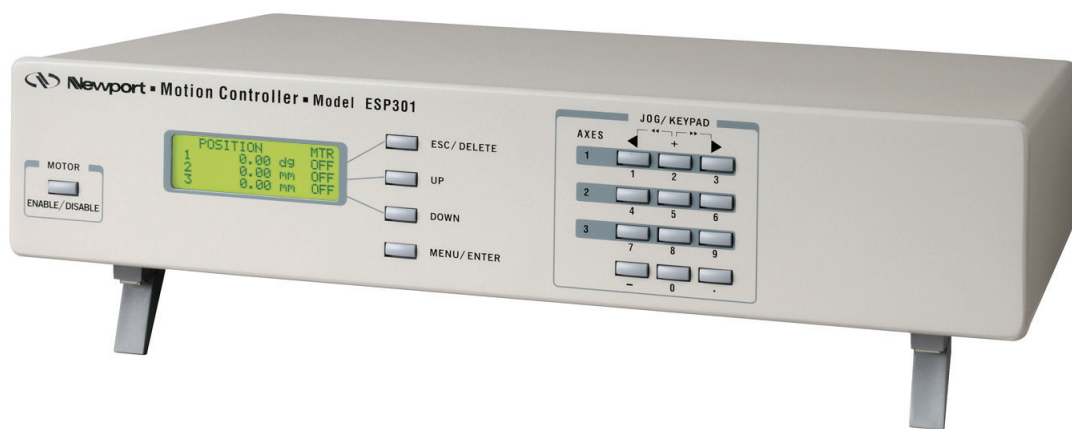


# ESP301

## *Integrated 3-Axis Motion Controller/Driver*



**Newport®**  
Experience | Solutions

## **USB Driver Installation Manual**

*For Motion, Think Newport™*



# Table of Contents

---

<b>1.0</b>	<b>Initial Setup</b> .....	<b>1</b>
1.1	ESP301 USB Driver .....	1

---

<b>2.0</b>	<b>ESP301 USB Driver Installation on Windows 7</b> .....	<b>1</b>
2.1	ESP301 USB Driver Installation on Windows 7 .....	1

---

<b>3.0</b>	<b>ESP301 Installation Verification</b> .....	<b>3</b>
------------	---	----------

---

	<b>Service Form</b> .....	<b>5</b>
--	---------------------------	----------



# ESP301

## USB Driver Installation Manual

### 1.0 Initial Setup

This chapter describes the necessary steps to be performed prior to use any Newport ESP301 component for the first time.

#### 1.1 ESP301 USB Driver



#### CAUTION

Before any software installation, contact your I.T. manager to verify if you have the appropriate rights.

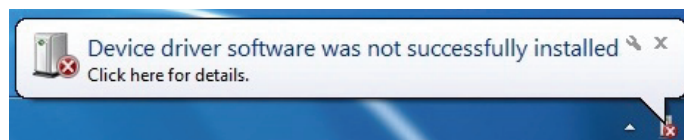
Component	Description
USB Driver	<i>USB VCP (Virtual COM Port)</i> Requires by Windows to allow serial port communication with any ESP301 component.

### 2.0 ESP301 USB Driver Installation on Windows 7

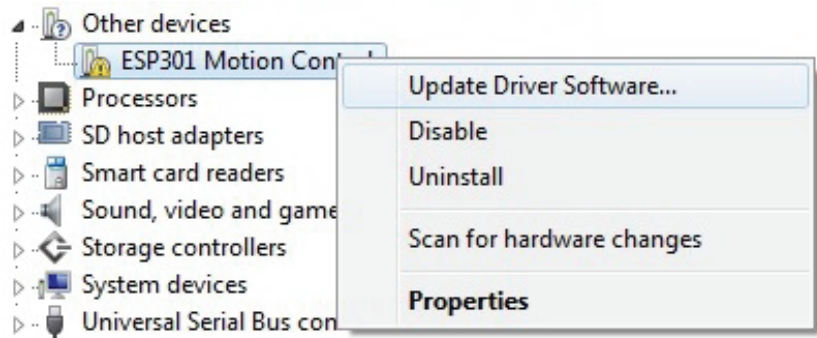
This chapter describes the necessary steps to be performed when connecting a Newport ESP301 to a PC computer for the first time.

#### 2.1 ESP301 USB Driver Installation on Windows 7

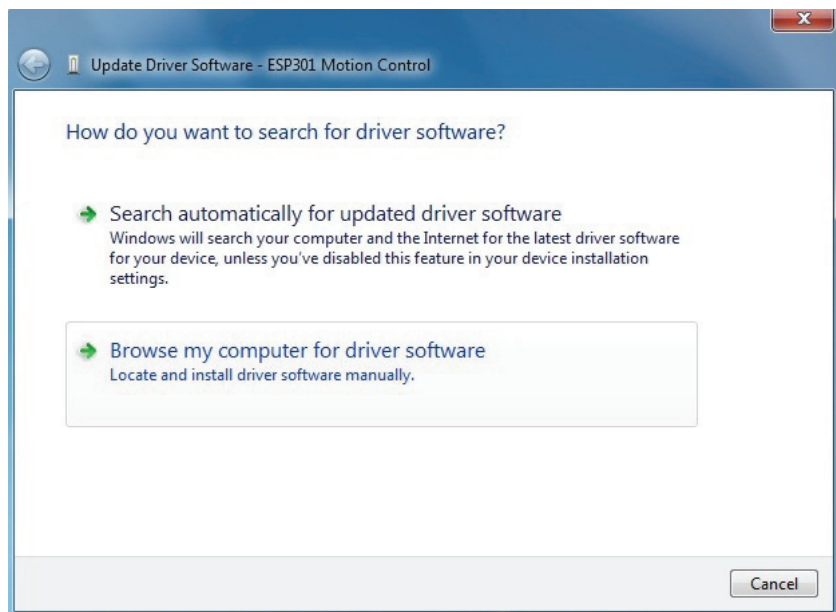
1. Download the ESP301 USB driver from Newport website and save to a local drive
2. Connect the ESP301 controller to a USB port with the provided USB cable
3. Detection of this new connected device (the first time) is signaled by a message in the bottom -right of the screen



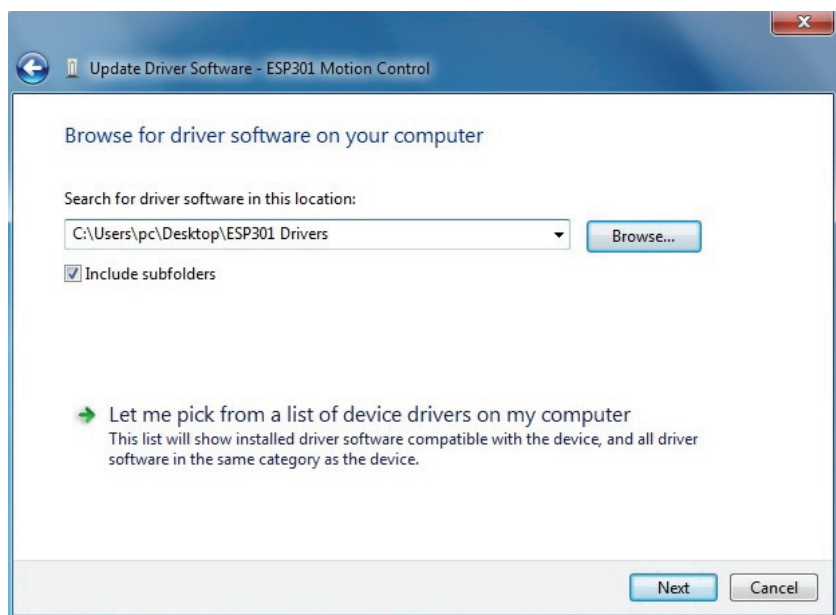
- In Windows Device Manager right click ESP301 Motion Controller and select “Update Driver Software...”



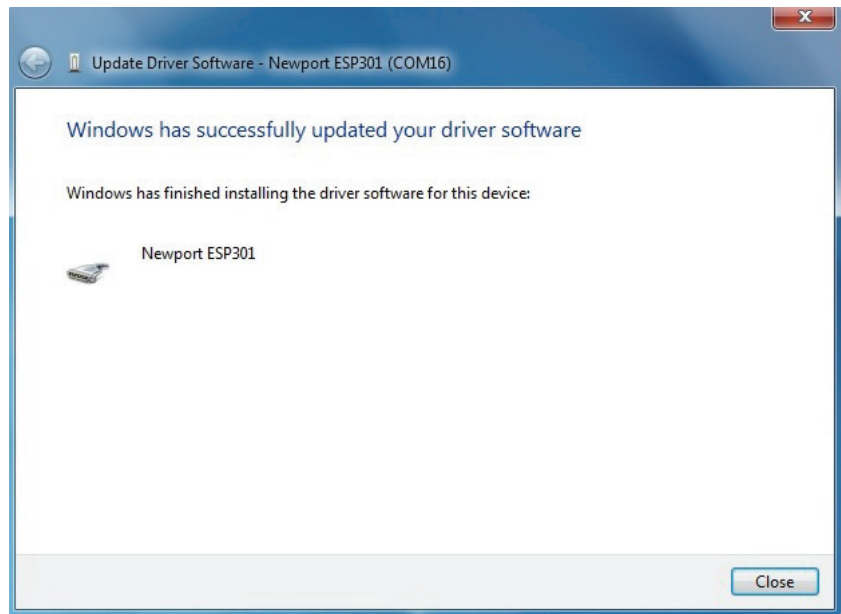
Click “Browse my computer for driver software”



- In the following window click browse and select the drivers location



6. The following window will pop up after driver installation is completed



### 3.0 ESP301 Installation Verification

To verify installation open Device Manager and expand “Ports (COM and LPT)” line. The following will be visible



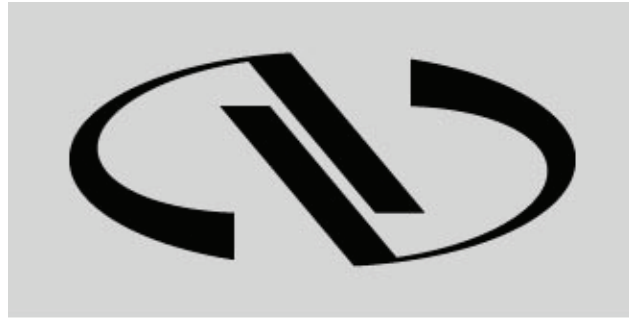
#### NOTES

**Note the COM port number (x) assigned to the device. This will be required for troubleshooting.**









**Newport®**

Experience | Solutions

Visit Newport Online at:  
[www.newport.com](http://www.newport.com)

**North America & Asia**

Newport Corporation  
1791 Deere Ave.  
Irvine, CA 92606, USA

**Sales**

Tel.: (800) 222-6440  
e-mail: [sales@newport.com](mailto:sales@newport.com)

**Technical Support**

Tel.: (800) 222-6440  
e-mail: [tech@newport.com](mailto:tech@newport.com)

**Service, RMAs & Returns**

Tel.: (800) 222-6440  
e-mail: [service@newport.com](mailto:service@newport.com)

**Europe**

MICRO-CONTROLE Spectra-Physics S.A.S  
9, rue du Bois Sauvage  
91055 Évry CEDEX  
France

**Sales**

Tel.: +33 (0)1.60.91.68.68  
e-mail: [france@newport.com](mailto:france@newport.com)

**Technical Support**

e-mail: [tech\\_europe@newport.com](mailto:tech_europe@newport.com)

**Service & Returns**

Tel.: +33 (0)2.38.40.51.55