

# Agilis AG-UC2 & AG-UC8

## *Agilis™ Series Controllers*



## Applet Manual

 **Newport®**

Software V2.0.x

# Table of Contents

---

<b>1.0</b>	<b>Introduction .....</b>	<b>1</b>
1.1	Purpose.....	1
1.2	Overview .....	1
1.3	Controller State Diagram .....	1

---

<b>2.0</b>	<b>User Interface .....</b>	<b>2</b>
2.1	Device selection .....	2
2.2	Configuration .....	3
2.3	Main .....	5
2.4	Diagnostics.....	7
2.5	About.....	8

---

	<b>Service Form .....</b>	<b>9</b>
--	---------------------------	----------

# Agilis AG-UC2 & AG-UC8

## Agilis™ Series Controllers

### 1.0 Introduction

#### 1.1 Purpose

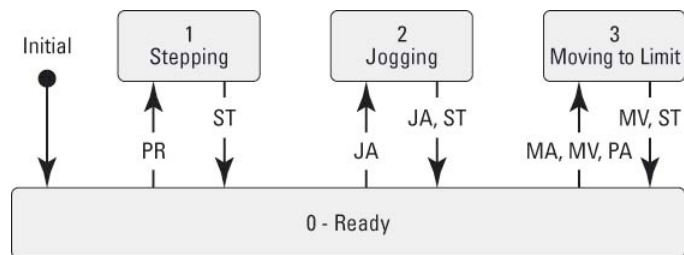
The purpose of this document is to provide instructions on how to use the Newport AG-UC2-UC8 Applet.

#### 1.2 Overview

The Newport AG-UC2-UC8 Applet is a software application that has a graphical user interface (GUI) which allows the user to interact with the AGILIS-UC2 or AGILIS-UC8 controller.

#### 1.3 Controller State Diagram

The AGILIS-UC controller is defined by the following state diagram.



The numbers represent the values of the status that can be queried with the TS command.  
 Shown are only transitions made by command. Internal transitions like from STEPPING to READY at the end of a PR command are not shown.

#### Controller’s LED display:

- READY: **SOLID GREEN.**
- STEPPING: **FAST BLINKING GREEN.**
- JOGGING: **FAST BLINKING GREEN.**
- MOVING TO LIMIT: **FAST BLINKING GREEN.**

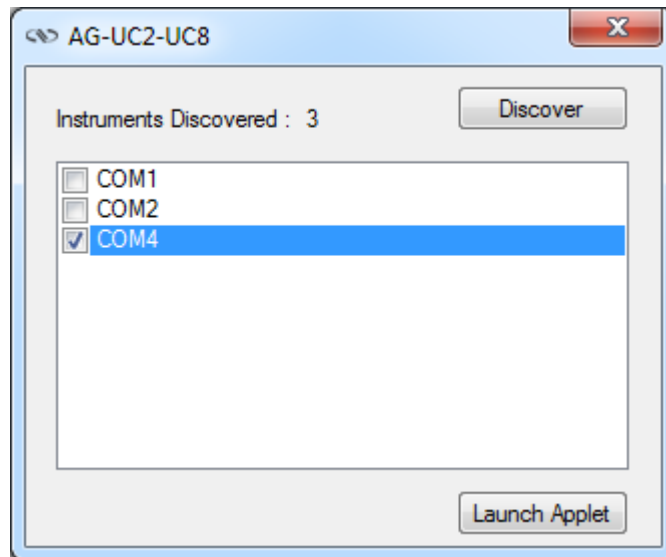
## 2.0 User Interface

---

### 2.1 Device selection

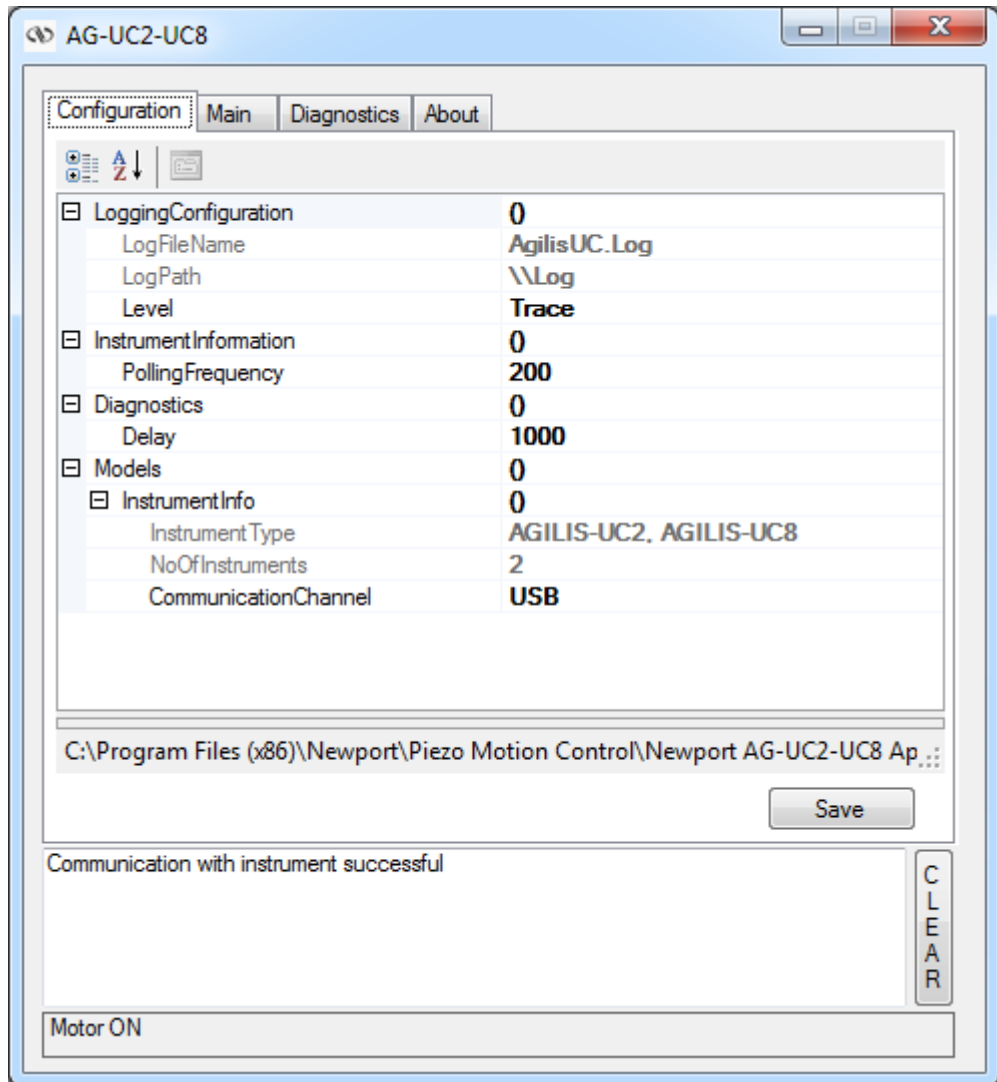
Click on the “Discover” button to get a list of detected serial COM ports.

Next, select the serial COM port that corresponds to your device and click the “Launch Applet” button to run the graphical interface.



## 2.2 Configuration

The Configuration tab allows the user to view and / or change information related to the logging configuration and the instrument settings. Read only values are displayed for the log file name and the log file path. The logging level may be changed to any of the settings in the drop-down list on the right hand side. Trace is the most detailed of the settings and when this setting is selected the applet logs everything. Critical Error is the least detailed of the settings and when this setting is selected the applet will only log errors that are defined to be critical.



The polling interval defines the number of milliseconds between each time the applet polls the controller for the latest information. The user may change the polling interval by entering a value.

The **Save** button allows to save the current settings to the configuration file.

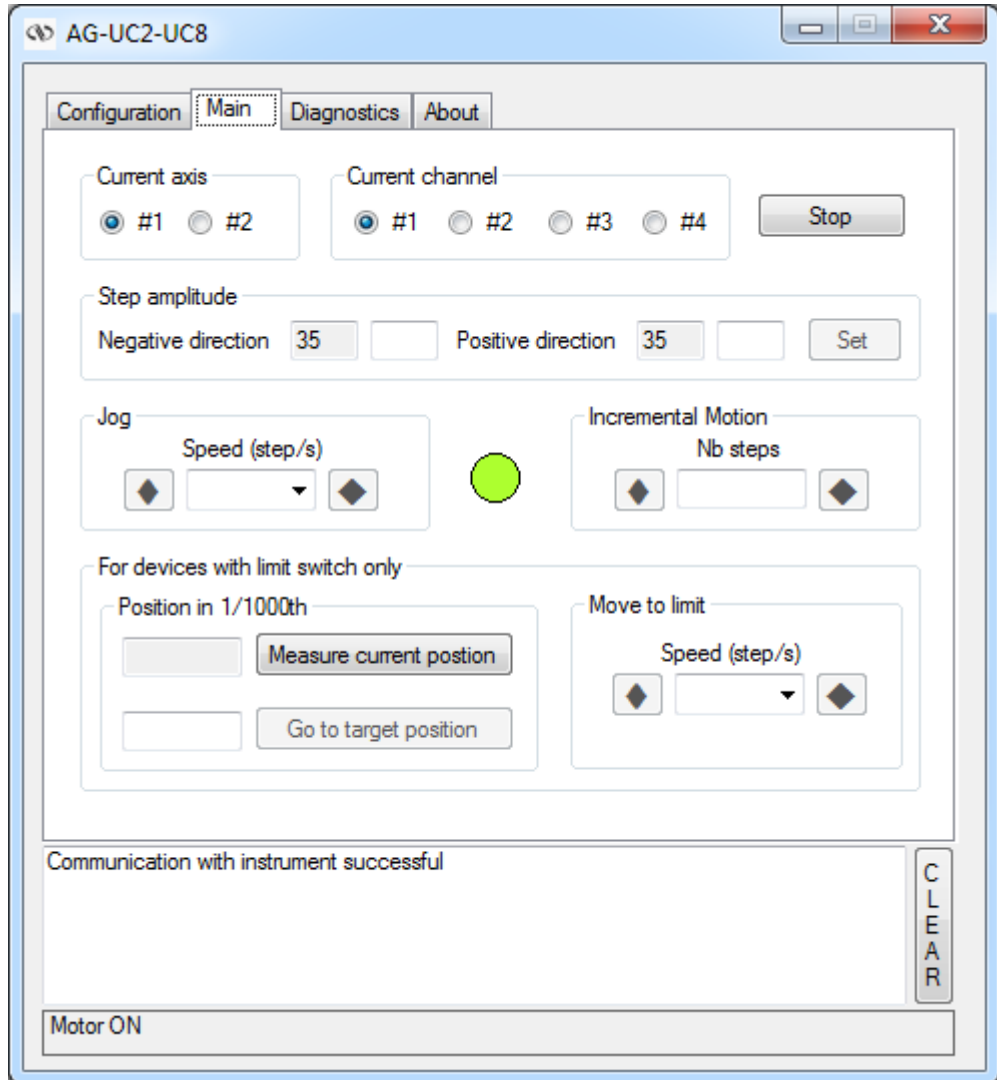
**Configurable settings**

The following table describes all the settings that can be change by the user.

Parameter	Description	Values	Default
<b>LoggingConfiguration</b>			
Level	Logging level. Trace is the most detailed of the settings and when this setting is selected the applet logs everything. Critical Error is the least detailed of the settings and when this setting is selected the applet will only log errors that are defined to be critical.	Trace Detail Equipment Message Info Warning Error Critical Error	<b>Trace</b>
<b>InstrumentInformation</b>			
PollingFrequency	The polling interval defines the number of milliseconds between each time the applet polls the instrument for the latest information.	An Integer	<b>200</b>
<b>Diagnostics</b>			
Delay	The Delay defines the number of milliseconds (delay) between each command of a file of commands in the diagnostics tab.	An Integer	<b>1000</b>
<b>Models\InstrumentInfo</b>			
CommunicationChannel	The communication channel	USB	<b>USB</b>

### 2.3 Main

The Main tab displays the main controls in the applet like a virtual front panel. It is updated each time the polling interval timer expires.



#### “Current axis”

In the “Current axis” area, the axis number is selected for the following functions.

#### “Current channel”

In the “Current channel” area, the piezo actuators are selected by pairs. This area is specific to AG-UC8.

#### “Step amplitude”

In the “Step amplitude”, the currents steps amplitudes are displayed in a disabled text box: “Negative direction” and “Positive direction”. These steps amplitude can be modified and saved with the “Set” button (Maximum 50).

**“Jog”**

In the “Jog” area, the speed can be defined (5, 100, 666, 1700 steps/s). A jog motion can be performing in the negative direction or a positive direction.

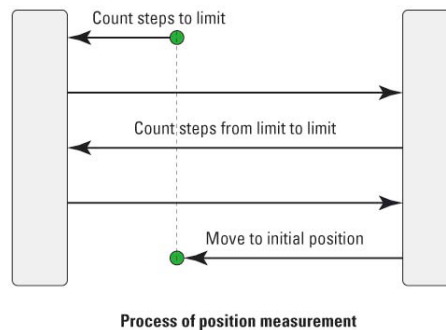
**“Incremental Motion”**

In the “Incremental Motion” area, the step can be defined. For this step, a relative move can be performing in the negative direction or a positive direction.

**“Position in 1/1000<sup>th</sup>”**

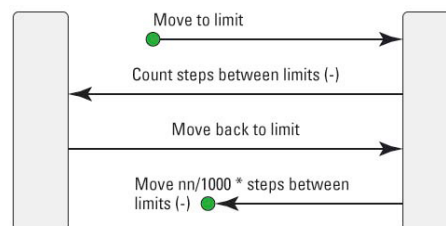
**“Measure current position”**

The distance of the current position to the limit in 1/1000th of the total travel is displayed after a measure. This measure is launched using the “Measure current position” button. This only works with devices that feature a limit switch like models AG-LS25, AG-M050L and AG-M100L.



**“Go to target position”**

The “Go to target position” button starts a process to move to an absolute position (see below). This only works with devices that feature a limit switch like models AG-LS25, AG-M050L and AG-M100L.



**“Move to limit”**

In the “Move to limit” area, the speed can be defined (5, 100, 666, 1700 steps/s) for starts a motion to the limits. This only works with devices that feature a limit switch like models AG-LS25, AG-M050L and AG-M100L.



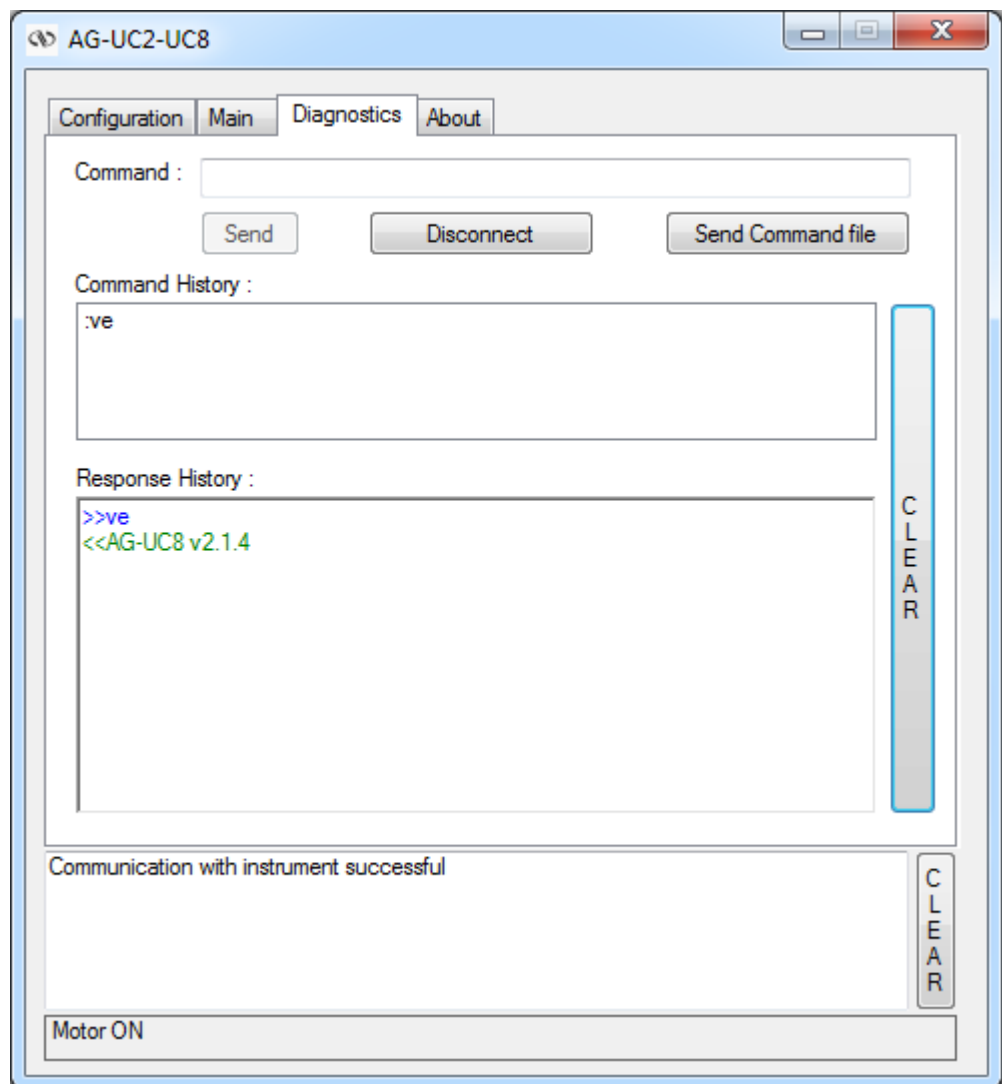
## 2.4 Diagnostics

The Diagnostics tab allows the user to enter instrument commands and to view the history of commands sent and responses received. This list of commands and the syntax of each command can be found in the user’s manual for the instrument.

The Send button is used to send the contents of the Command text box to the instrument.

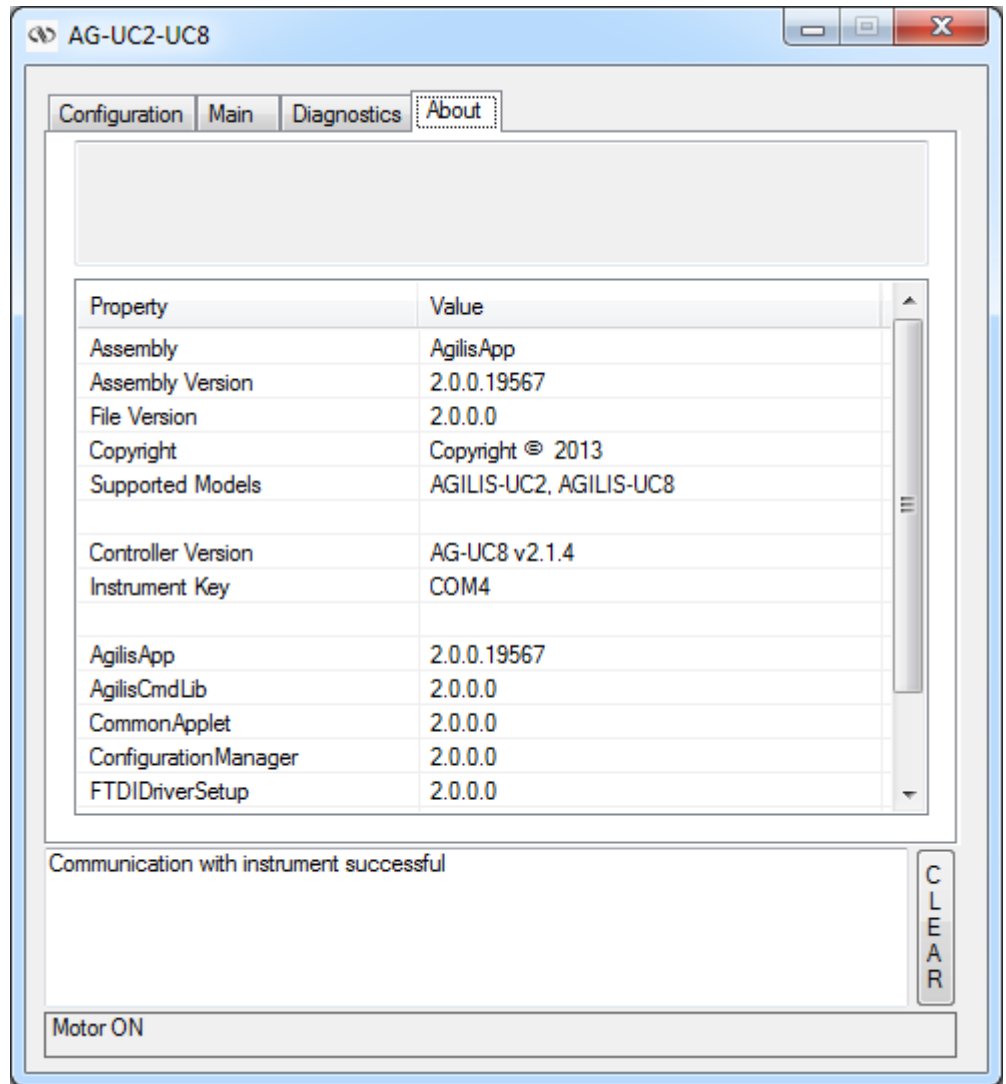
The Disconnect / Connect button allows communication to be reestablished.

A file of commands can be sent line by line to the instrument with the “Send Command file” button.



## 2.5 About

The About tab allows to display information about the applet and the connected instrument. It displays the applet name, version, and copyright information. It also displays the instrument model, instrument key (serial number) and firmware version.







Visit MKS | Newport Online at:  
[www.newport.com](http://www.newport.com)

**North America & Asia**

Newport Corporation  
1791 Deere Ave.  
Irvine, CA 92606, USA

**Sales**

Tel.: +1 (949)-863-3144  
e-mail: [sales@newport.com](mailto:sales@newport.com)

**Technical Support**

Tel.: +1 (949)-863-3144  
e-mail: [tech@newport.com](mailto:tech@newport.com)

**Service, RMAs & Returns**

Tel.: +1 (949)-863-3144  
e-mail: [service@newport.com](mailto:service@newport.com)

**Europe**

MICRO-CONTROLE Spectra-Physics S.A.S  
7 rue des Plantes  
45340 Beaune-la-Rolande  
France

**Sales Europe (EMEA)**

Tel.: +49 (0) 6151-708-0  
e-mail: [germany@newport.com](mailto:germany@newport.com)

**Sales France**

Tel.: +33 (0)1 60 91 68 68  
e-mail: [france@newport.com](mailto:france@newport.com)

**Sales UK**

Tel.: +44 (0)1235 432 710  
e-mail: [uk@newport.com](mailto:uk@newport.com)

**Technical Support**

e-mail: [tech\\_europe@newport.com](mailto:tech_europe@newport.com)

**Service & Returns**

Tel.: +33 (0)2 38 40 51 55  
[DST-BEA-RMA-service@newport.com](mailto:DST-BEA-RMA-service@newport.com)