

# Agilis AG-UC2 & AG-UC8

## Agilis™ Series Controllers



# Table of Contents

---

<b>1.0</b>	<b>Introduction .....</b>	<b>1</b>
1.1	Purpose.....	1
1.2	Overview.....	1
1.3	Controller State Diagram .....	1

---

<b>2.0</b>	<b>User Interface .....</b>	<b>2</b>
2.1	Launching Applet.....	2
2.2	File menu .....	3
2.3	Help menu.....	4
2.4	Main tab .....	6
2.5	Terminal tab.....	7

---

	<b>Service Form .....</b>	<b>9</b>
--	---------------------------	----------

# Agilis AG-UC2 & AG-UC8

## Agilis™ Series Controllers

### 1.0 Introduction

#### 1.1 Purpose

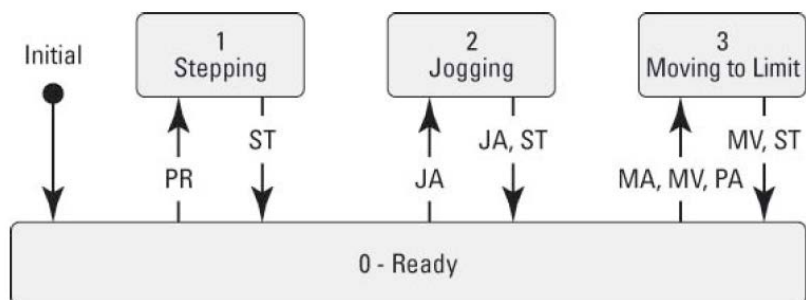
The purpose of this document is to provide instructions on how to use the Newport AG-UC2-UC8 Applet.

#### 1.2 Overview

The Newport AG-UC2-UC8 Applet is a software application that has a graphical user interface (GUI) which allows the user to interact with the AGILIS-UC2 or AGILIS-UC8 controller.

#### 1.3 Controller State Diagram

The AGILIS-UC controller is defined by the following state diagram.



The numbers represent the values of the status that can be queried with the TS command.  
 Shown are only transitions made by command. Internal transitions like from STEPPING to READY at the end of a PR command are not shown.

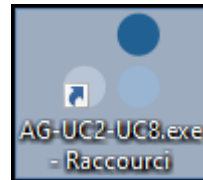
#### Controller’s LED display:

- READY: **SOLID GREEN**
- STEPPING: **FAST BLINKING GREEN**
- JOGGING: **FAST BLINKING GREEN**
- MOVING TO LIMIT: **FAST BLINKING GREEN**

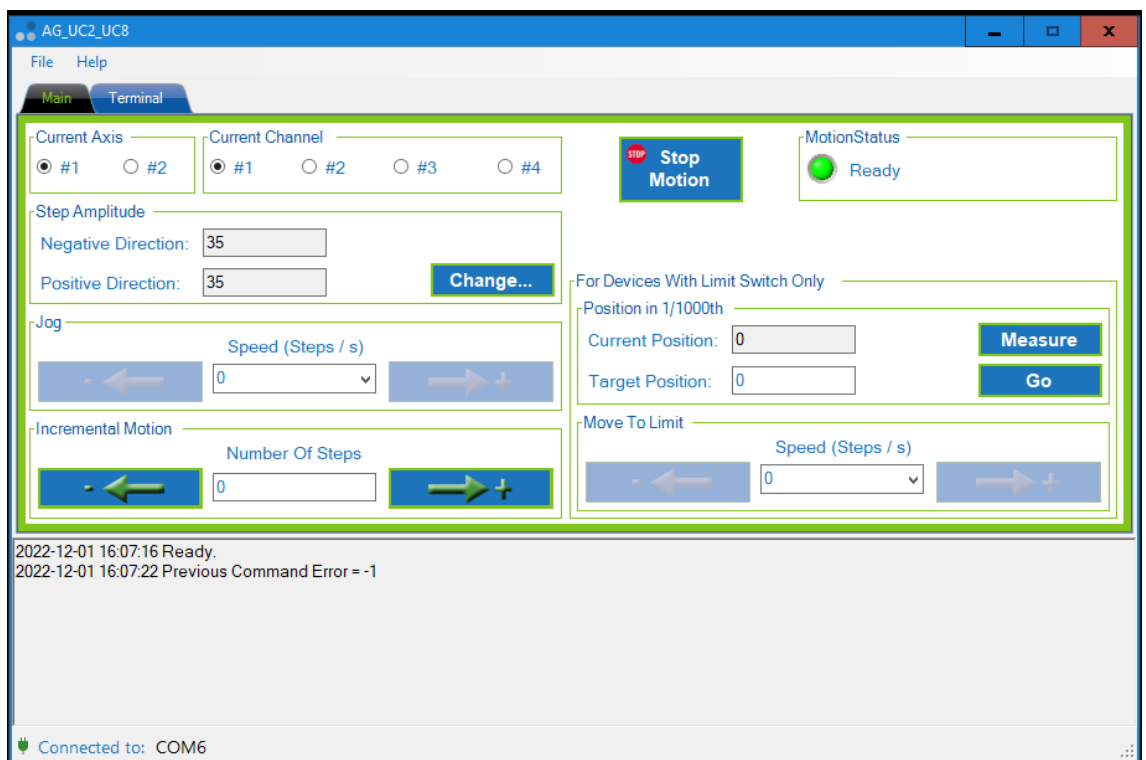
## 2.0 User Interface

### 2.1 Launching Applet

Once the piezo stages and the computer USB cable are connected to the AG-UC2 or AG-UC8 controller, double-click on the software icon.



The following screen appears.

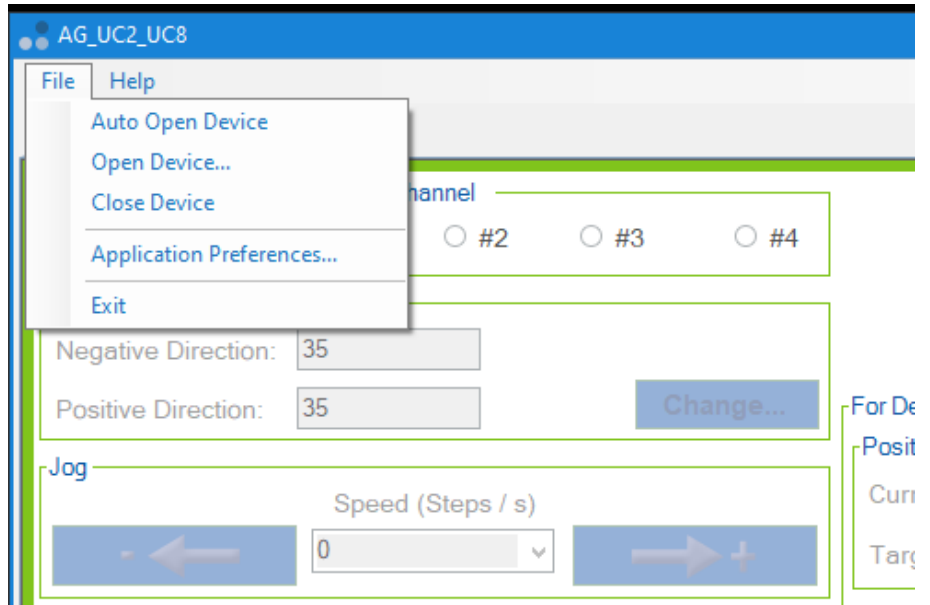


The software automatically connects to the PC port linked to the controller (COM6 in the above example as stated in the bottom).

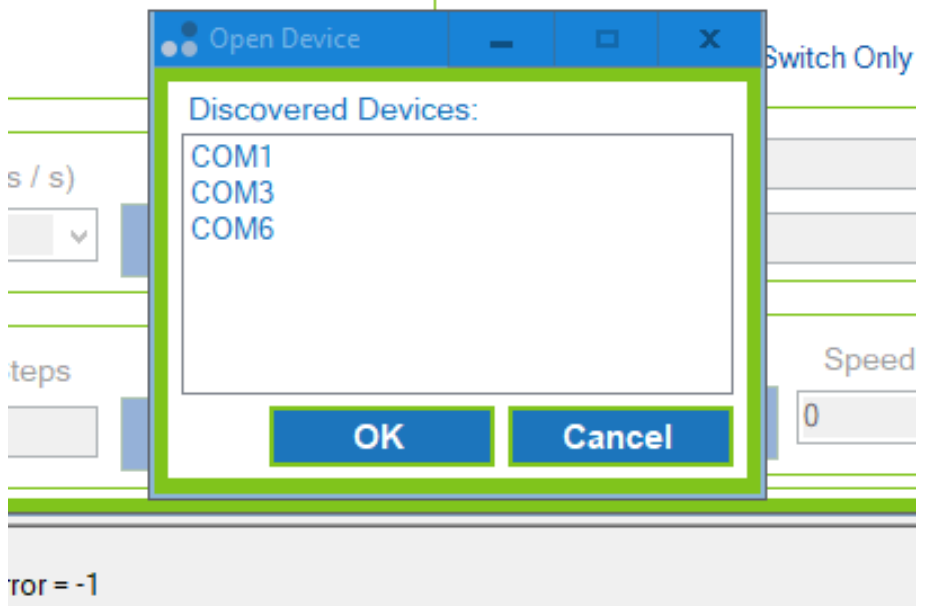
## 2.2 File menu

If the USB cable is plugged after launching the Applet, all buttons will remain grey.

- In this case, click "**File / Auto Open Device**" to automatically connect to the involved port.

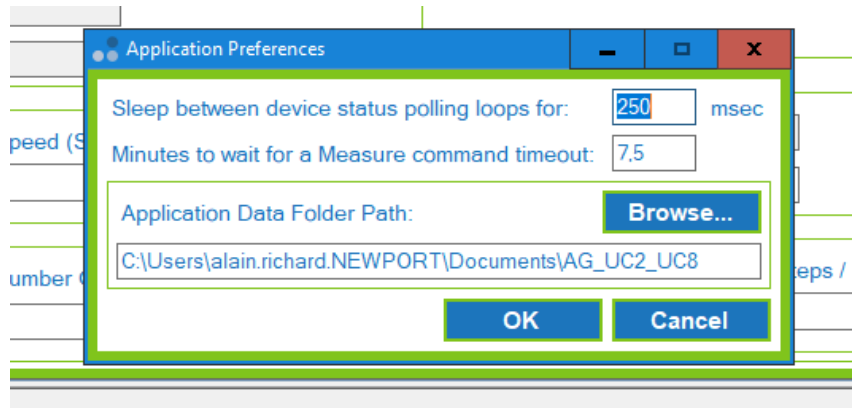


- Alternately, you can click "**File / Open Device**" and select the desired port.



- Clicking "**File / Close Device**" will disconnect the PC from the controller.

- Clicking "**File / Application Preferences**" opens this box:



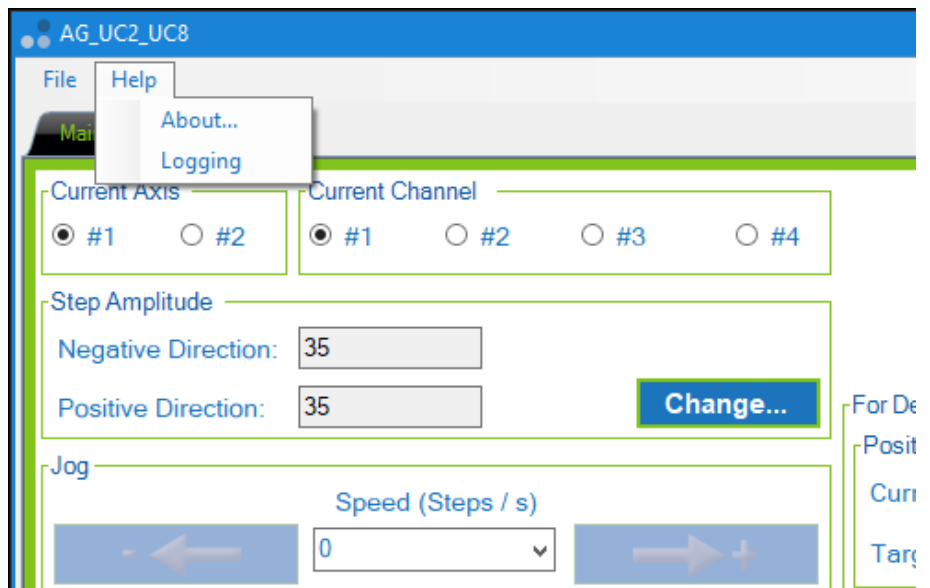
The polling interval defines the number of milliseconds between each time the applet polls the controller for the latest information. The user may change the polling interval by entering a value.

The Measure command timeout defines the number of minutes before a Measure command aborts if not complete.

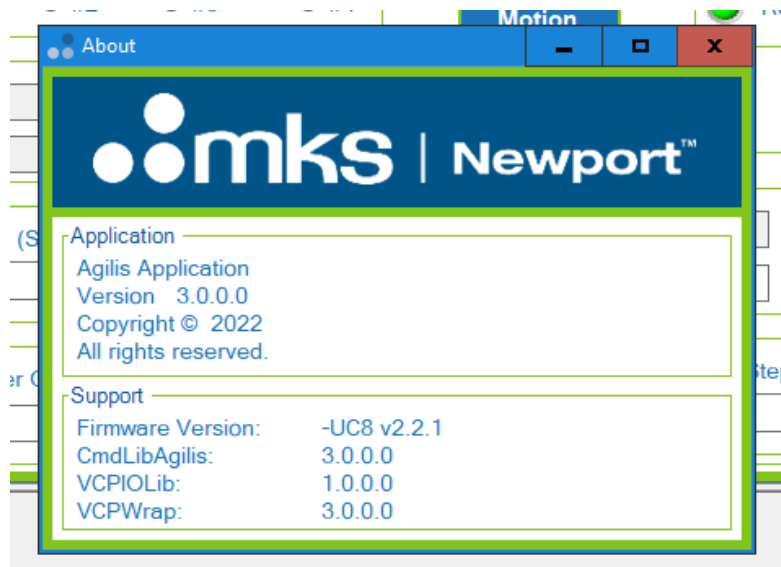
The default path to application data can be modified here by the user.

- Clicking "**File / Exit**" will close the application

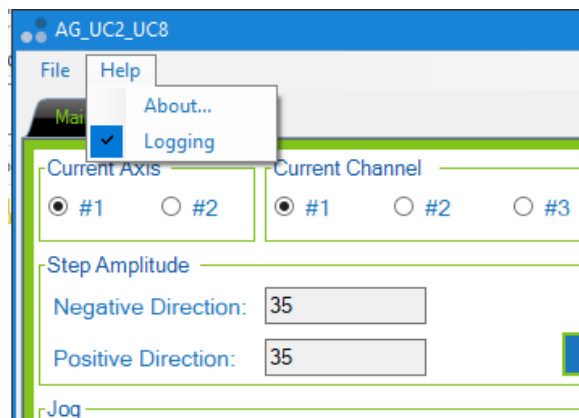
### 2.3 Help menu



- Click "**Help / About**" to display information about the application

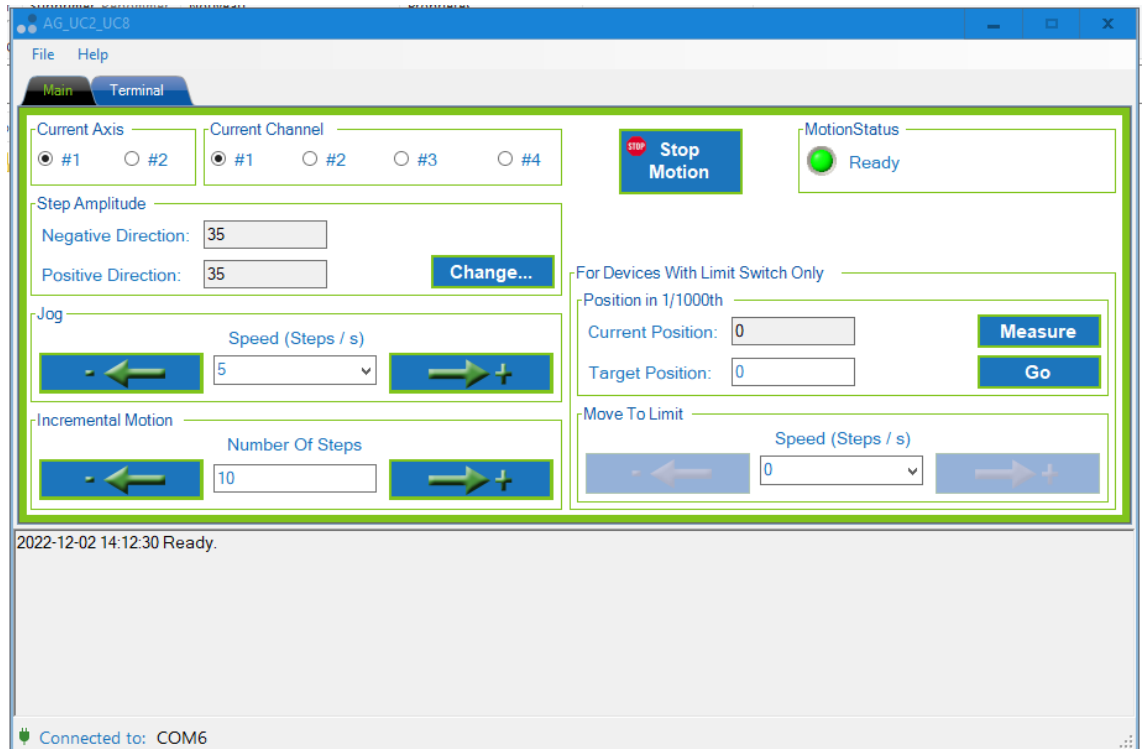


- Click "**Help / Logging**" to tick this option and begin to log events



## 2.4 Main tab

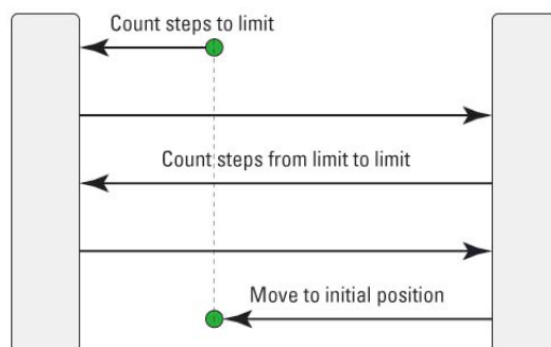
The Main tab displays the main controls in the applet like a virtual front panel. It is updated each time the polling interval timer expires.



- "Current Axis" and "Current Channel" defines the axis to control in the pair of axes (specific to AG-UC8)
- "Step amplitude" negative and positive direction values can be modified (1 to 50)
- "Jog" area: speed in Steps/scan be selected (0, 5, 100, 666, 1700) and motion be obtained by pressing continuously the "-" or "+" arrow
- "Incremental Motion": number of steps can be entered and motion started by clicking the "-" or "+" arrow
- "Stop Motion" button immediately aborts move
- "Motion Status" is continuous green in ready state and blinking green during moves

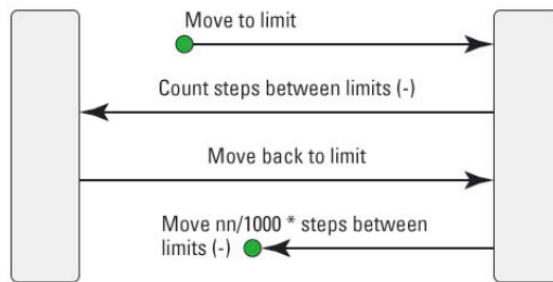
"Position in 1000th": the following features only apply to devices with a limit switch like models AG-LS25, AG-M050L and AG-M100L

- "Measure": the distance of the current position to the limit in 1/1000th of the total travel is displayed after a measure sequence





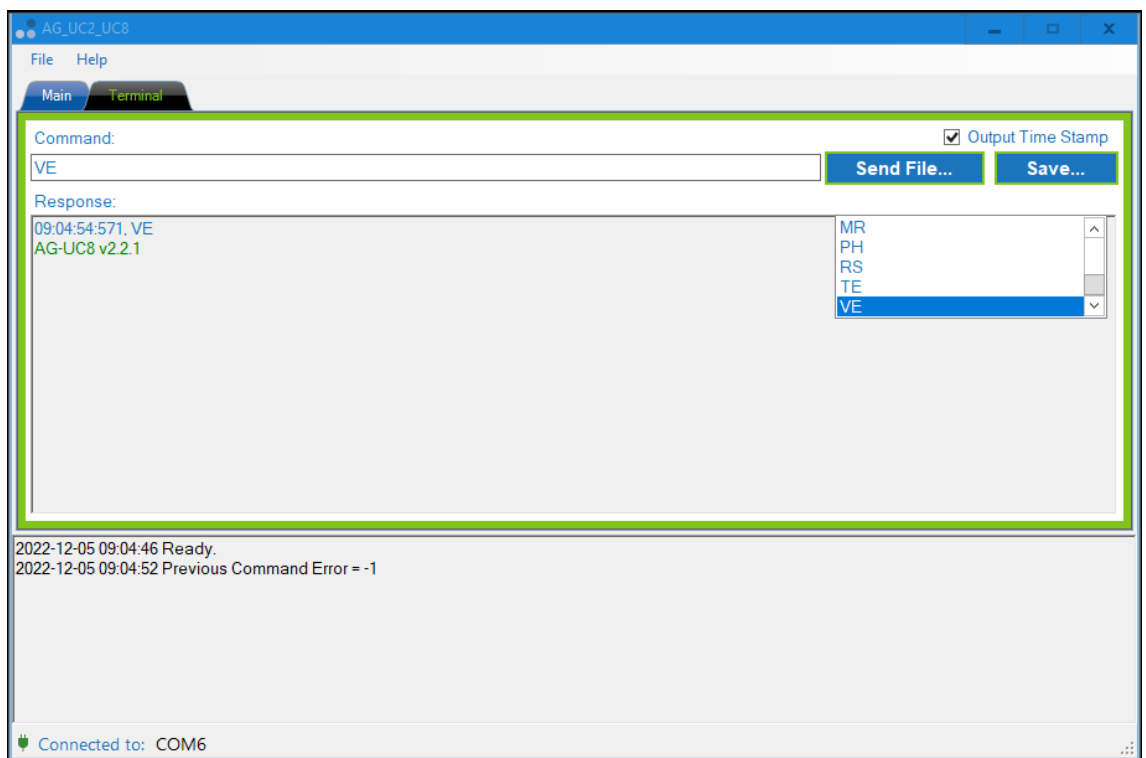
- "Go" to "Target Position" starts a process to move to an absolute position



- "Move To Limit": after selecting the speed, a motion to the limits can be launched by pressing "-" or "+" arrow

## 2.5 Terminal tab

The Terminal tab allows the user to enter instrument commands and to view the history of commands sent and responses received. This list of commands and the syntax of each command can be found in the user’s manual for the instrument.



- Enter the command to be sent in the "Command" area; the list of available commands displays on the right
- Send the command by pressing Enter key; command and response are displayed in the "Response" area
- A file of commands can be sent line by line to the instrument with the "Send file..." button
- "Save..." button allows saving the history of commands and responses in a text file

Note: the proposed folders for these files are located in the directory specified in "File / Application Preferences"







Visit MKS | Newport Online at:  
[www.newport.com](http://www.newport.com)

**North America & Asia**

Newport Corporation  
1791 Deere Ave.  
Irvine, CA 92606, USA

**Sales**

Tel.: +1 (949)-863-3144  
e-mail: [sales@newport.com](mailto:sales@newport.com)

**Technical Support**

Tel.: +1 (949)-863-3144  
e-mail: [tech@newport.com](mailto:tech@newport.com)

**Service, RMAs & Returns**

Tel.: +1 (949)-863-3144  
e-mail: [service@newport.com](mailto:service@newport.com)

**Europe**

MICRO-CONTROLE Spectra-Physics S.A.S  
7 rue des Plantes  
45340 Beaune-la-Rolande  
France

**Sales Europe (EMEA)**

Tel.: +49 (0) 6151-708-0  
e-mail: [germany@newport.com](mailto:germany@newport.com)

**Sales France**

Tel.: +33 (0)1 60 91 68 68  
e-mail: [france@newport.com](mailto:france@newport.com)

**Sales UK**

Tel.: +44 (0)1235 432 710  
e-mail: [uk@newport.com](mailto:uk@newport.com)

**Technical Support**

e-mail: [tech\\_europe@newport.com](mailto:tech_europe@newport.com)

**Service & Returns**

Tel.: +33 (0)2 38 40 51 55  
[DST-BEA-RMA-service@newport.com](mailto:DST-BEA-RMA-service@newport.com)