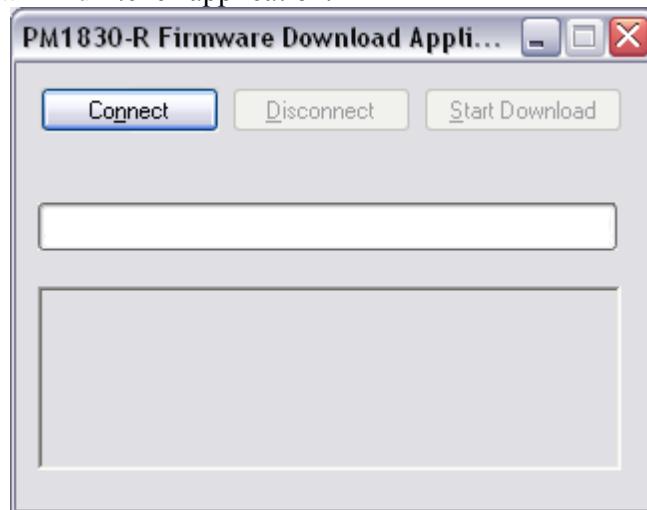


1830-R Firmware Upgrade Instructions

To upgrade firmware:

This firmware download software requires that the necessary USB drivers have been installed on your computer. If the computer interface software (accessible online in Literature & Downloads tab of the 1830-R power meter product web page) has not already been installed a full software install will need to be done prior to updating firmware.

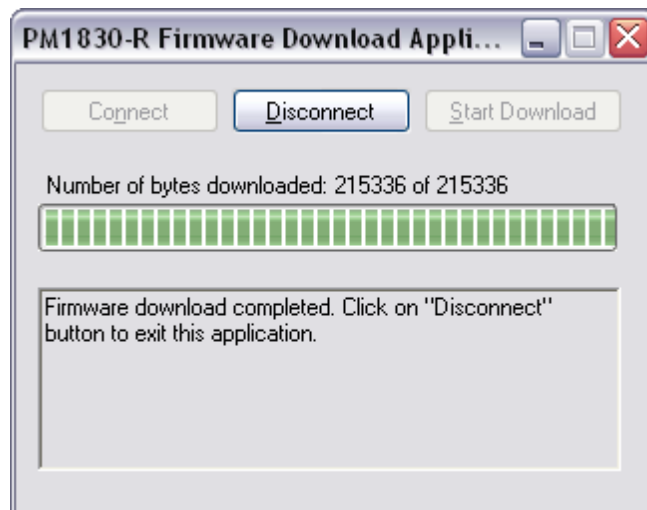
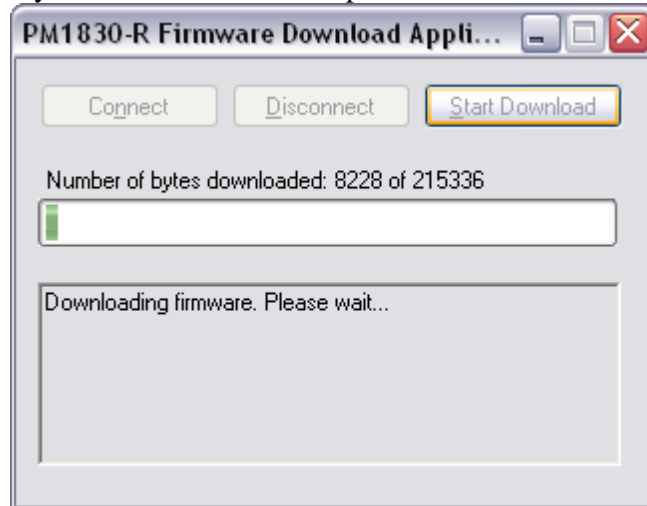
1. Unzip the attached file, and place all files in “C:\Program Files\Newport\Newport Power Meter Application” folder if possible; this is the default install location for the Power Meter software. Make sure the USB cable is connected between host PC and 1830-R, and 1830-R is powered ON.
2. Run “PM1830-R-FwrDnld-x.exe” application.



3. Click on “Connect” button. If the application was able to connect to the instrument, the “Start Download” and “Disconnect” buttons will get enabled. If the application was unable to connect to the instrument, make sure the USB drivers are installed correctly.



4. Click on “Start Download” button and wait until the entire firmware is downloaded. The unit will reset automatically at the end of download process and reboot with new firmware.



Files in Firmware that can be updated:

PM1830-R-FwrDnld-x.exe Main Firmware file
usbdl.dll file
USBWrap.dll file

What's New

The following is a list of added features and corrections to the 1830-R Optical Power Meter firmware:

Version 1.5 October 23, 2014

1. RS232 DIP switch setting for RS-232 communication Baud rate not working properly in previously versions are fixed.
2. A Bug in saving the startup settings are fixed.

3. GPIB communication lock-up problem under certain circumstances is fixed.
4. General communications lock-up when the delay between each command is very short is fixed.
5. Firmware installation failure of version 1.4 is fixed.
6. Other minor firmware errors are fixed.

Version 1.2 July 31, 2012

1. Fixed intermittent GPIB communication timeout issue.

Version 1.1 May 15, 2012

1. Fixed the issue with the meter displaying “OL” message on front-panel of instrument during range changes.

Version 1.0 November 10, 2011

1. Initial ship release version.