

URS100BCC & RVS80CC

ROTATION STAGES WITH DIRECT READING ENCODER FOR CLOSED LOOP APPLICATION



The stage is a standard rotation stage equipped with a high accuracy on-axis encoder from Renishaw, type RESM20 with a 20 µm scale pitch.

The RESM20 encoder is a one-piece stainless steel ring integrated under the rotation stage body; its low profile allows to minimize the height of the encoder housing and to keep a compact volume for the rotation stage.

The stage features a separate interface connector for the encoder Tonic readhead. A diagnostics LED on readhead interface allows to check the proper readhead adjustment and monitors the operation status of the encoder continuously.

URS100BCCHA Key Features

Standard URS100BCC specifications, except:

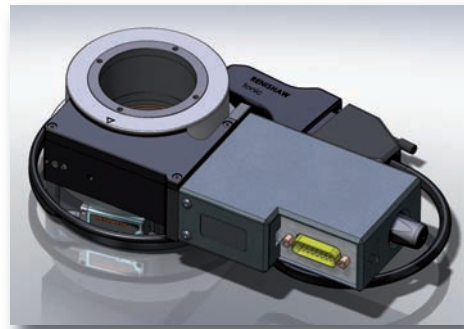
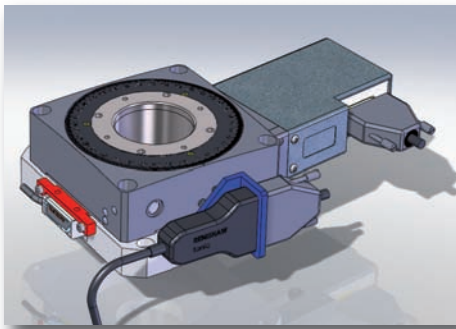
- | | |
|---|---------------------------|
| • Encoder resolution | 50 x 10 ⁻⁶ deg |
| • Accuracy | 0.001° with mapping |
| • Height increased by approx. 20 mm (encoder integration) | |
| • Separate interface connector for readhead | |

Note: The maximum speed of the stage is unchanged at 80 °/s.

RVS80CCHA Key Features

Standard RVS80CC specifications, except:

- | | |
|---|---------------------------|
| • Encoder resolution | 76 x 10 ⁻⁶ deg |
| • Reading accuracy | 0.005 deg |
| • Height increased by approx. 22 mm (encoder integration) | |
| • The encoder cable is directly connected into the mecatronic box for closed loop operation | |

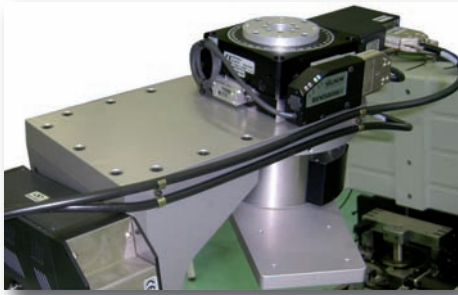


APPLICATIONS

X-Ray Diffractometer

The URS100BCCHA was included in several X-Ray diffractometers built for synchrotron facilities.

On the picture below, the URS100BCCHA is mounted on the crystal analyzer arm and is used to adjust the Bragg angle in X-Ray diffractometry where high accuracy is a must.



Calibration Bench in Automotive Industry

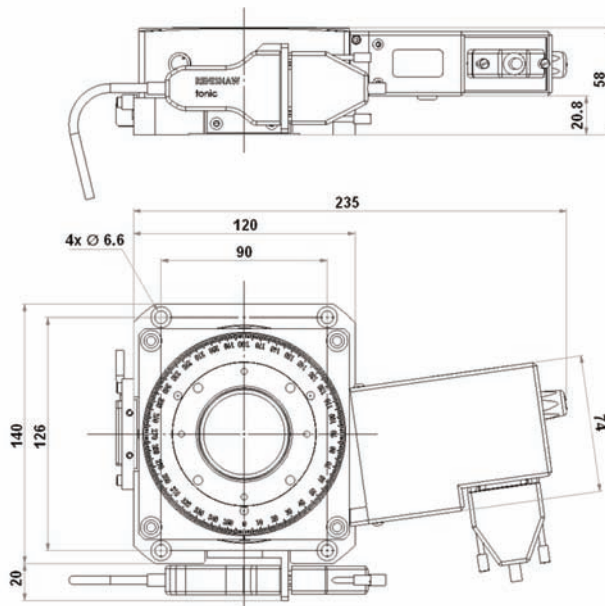
Fixed on the bracket, an URS100BCCHA with direct reading encoder is integrated in a sensor calibration bench for a manufacturer of automotive equipment in Korea.

The whole system was composed of 11 motorized axes in 3 stacks.

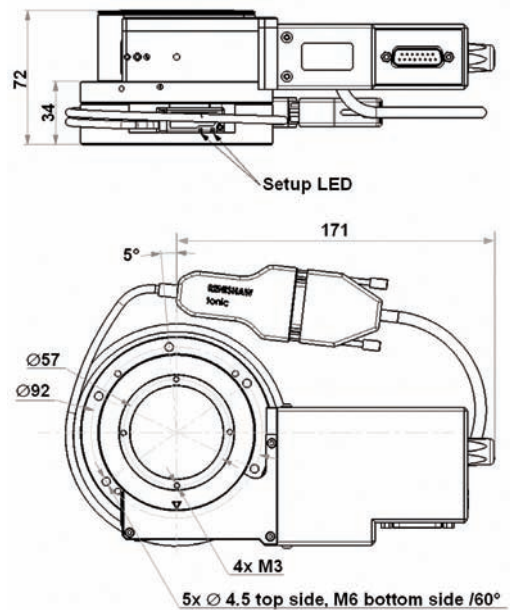


Dimensions

URS100BCCHA



RVS80CCHA



Newport Corporation, Global Headquarters
1791 Deere Avenue, Irvine, CA 92606, USA

PHONE: 1-800-222-6440 1-949-863-3144 FAX: 1-949-253-1680 EMAIL: sales@newport.com
Complete listings for all global office locations are available online at www.newport.com/contact

www.newport.com

	PHONE	EMAIL
Belgium	+32-(0)0800-11 257	belgium@newport.com
China	+86-10-6267-0065	china@newport.com
France	+33-(0)1-60-91-68-68	france@newport.com
Japan	+81-3-3794-5511	spectra-physics@splasers.co.jp
Taiwan	+886-(0)2-2508-4977	sales@newport.com.tw

	PHONE	EMAIL
Irvine, CA, USA	+1-800-222-6440	sales@newport.com
Netherlands	+31-(0)30 6592111	netherlands@newport.com
United Kingdom	+44-1235-432-710	uk@newport.com
Germany / Austria / Switzerland	+49-(0)6151-708-0	germany@newport.com

Newport Corporation, Irvine, California and Franklin, Massachusetts; Evry and Beaune-La-Rolande, France and Wuxi, China have all been certified compliant with ISO 9001 by the British Standards Institution. Santa Clara, California is DNV certified.