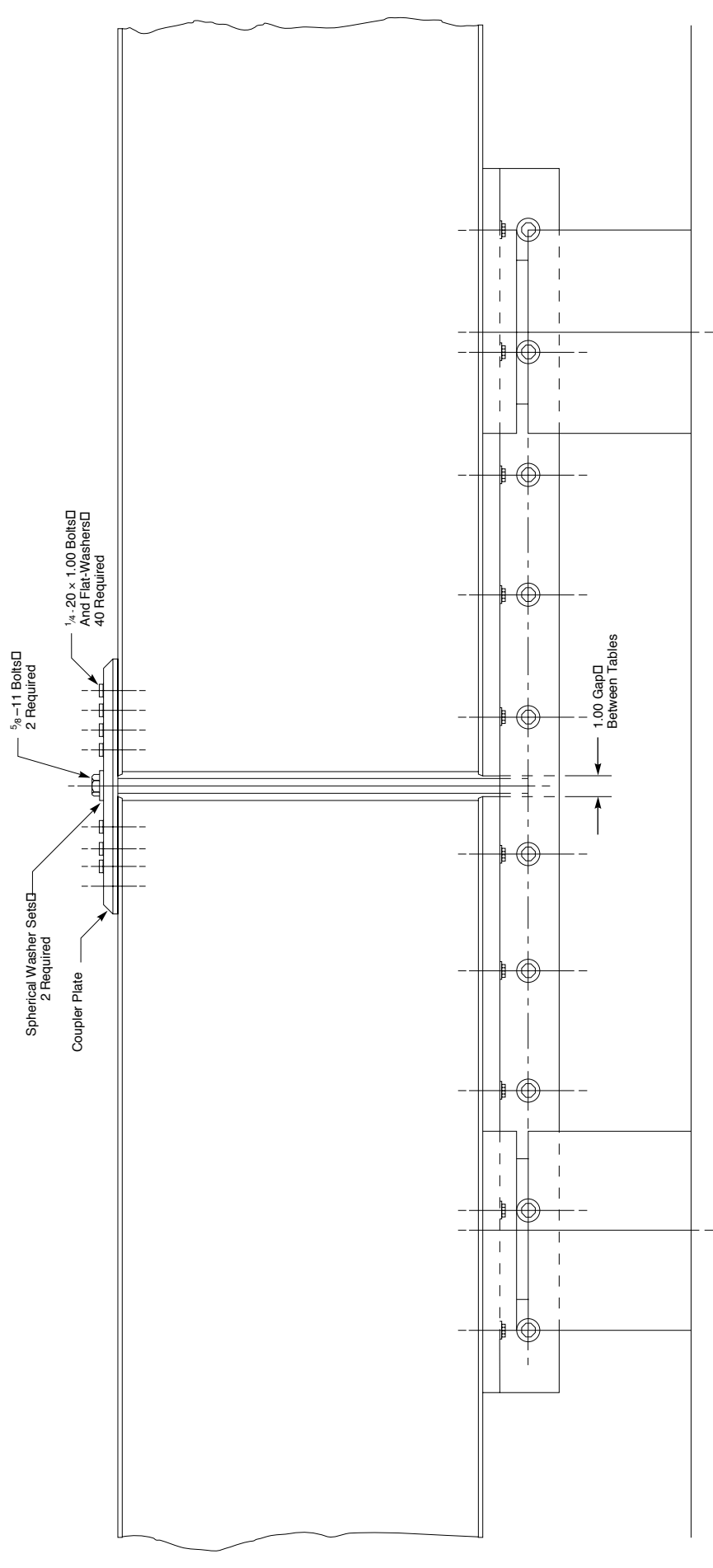


## Installation of Table Yoke

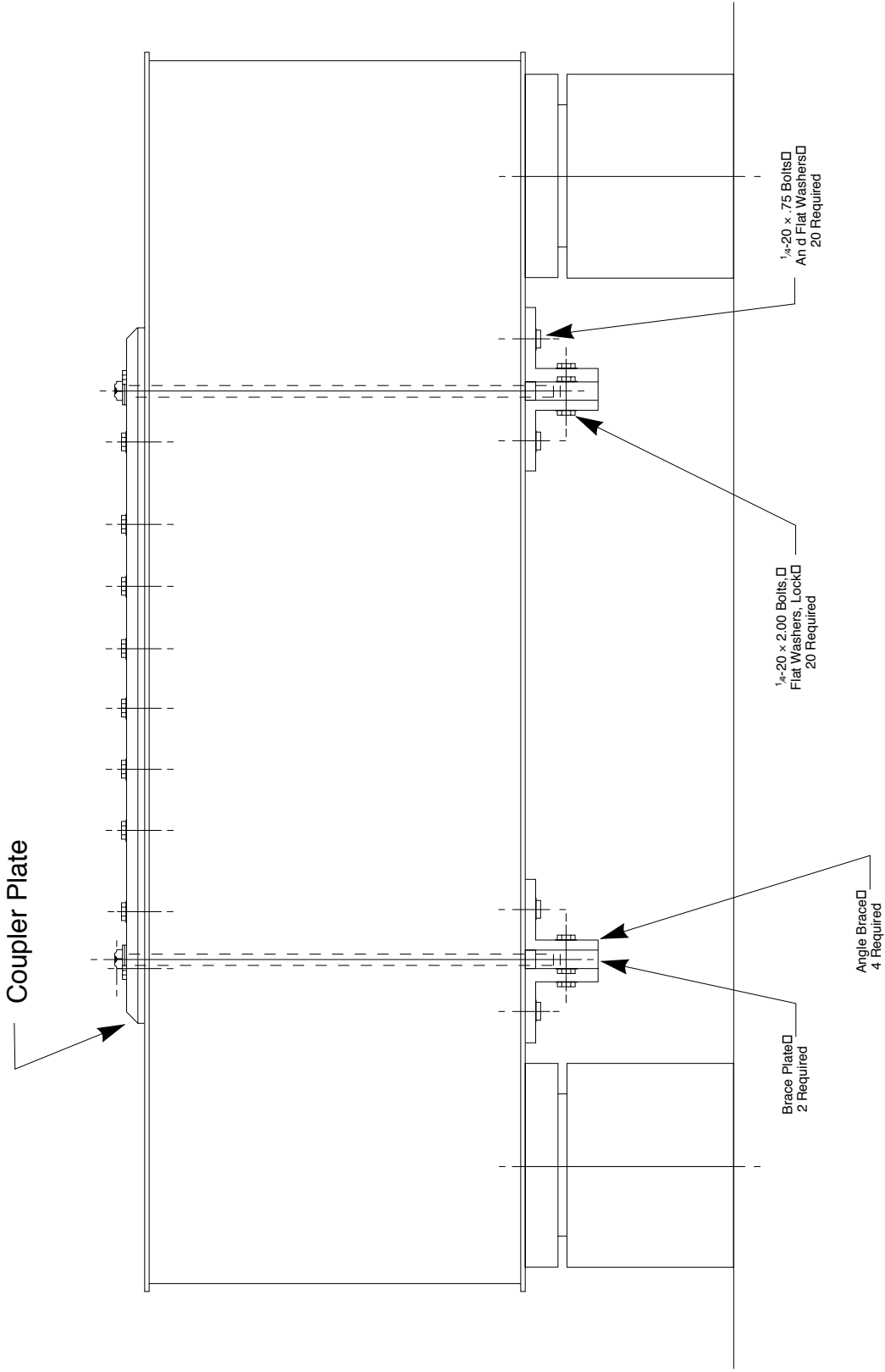
---

1. Orient both tables at 1.00" gap. Make certain table tops are parallel and co-planar.
2. Attach coupler plate to top of tables. Do not tighten  $\frac{1}{4}$ " bolts. Install finger-tight only!
3. Install  $\frac{5}{8}$ " diameter bolts through holes in coupler plate. Thread into mating holes on 1" thick brace plates. Adjust bolts so there is a  $\frac{1}{2}$ " gap between top of brace plate and bottom of tables. Orient brace plate at  $90^\circ$  to gap between tables.
4. Bolt angle braces to brace plate. Tighten bolts loosely. Transfer mark and drill and tap  $\frac{1}{4}$ -20 holes in bottom of tables. Install  $\frac{1}{4}$ -20 bolts through angles into bottom of table. Tighten securely.
5. Tighten bolts attaching angles to brace plates.
6. Tighten  $\frac{5}{8}$ " diameter bolts through coupler plate.
7. Tighten bolts attaching coupler plate to table tops.

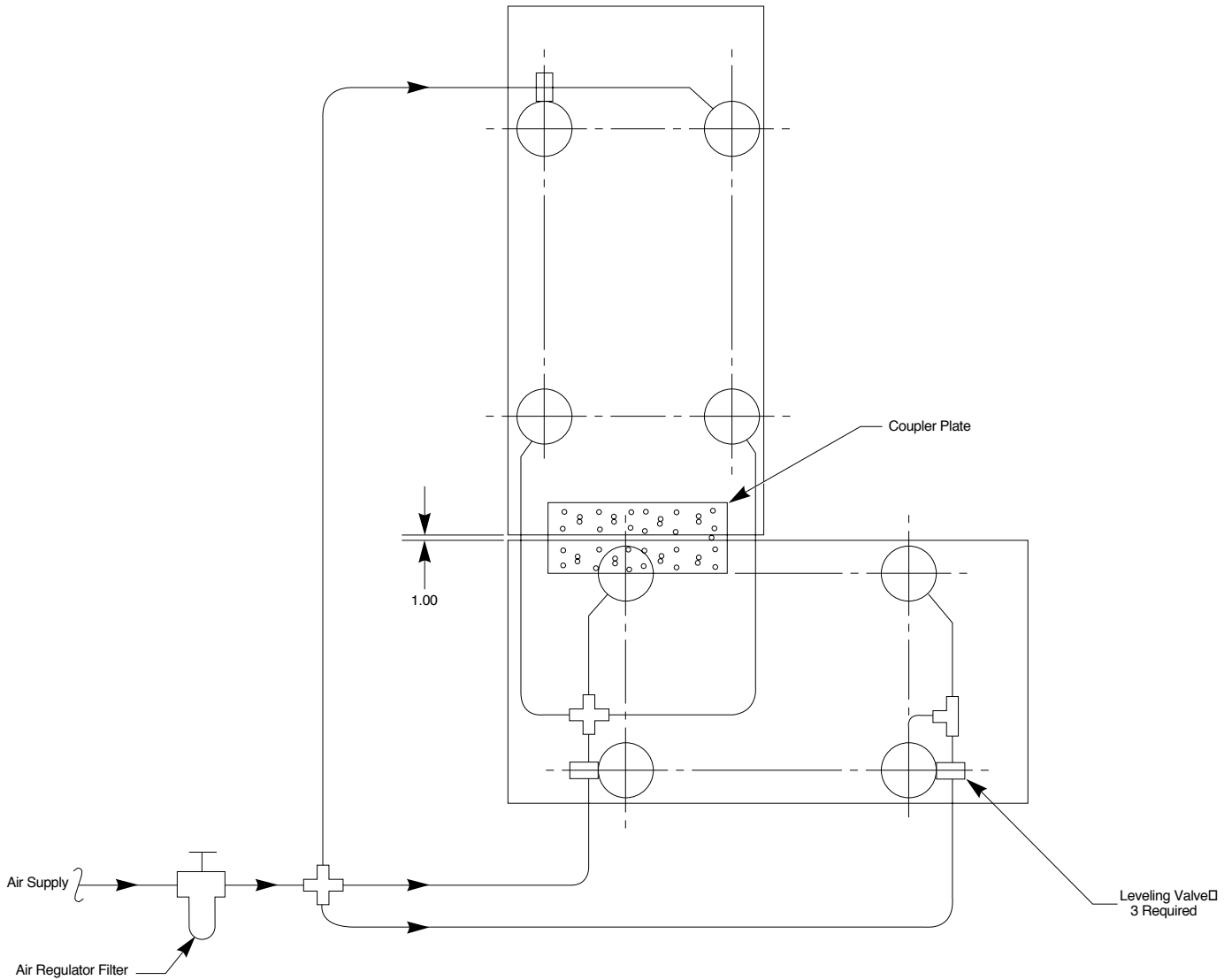
# Side View



# End View



## Top View



PN 14001-01, Rev. B  
IN-02931 (8/98)

Newport Corporation, Irvine, California, has been certified compliant with  
ISO 9002 by the British Standards Institution. Certificate No.: FM 27207.

### Corporate Headquarters

Newport Corporation  
1791 Deere Avenue  
Irvine, CA 92606  
Telephone: 949-863-3144  
Facsimile: 949-253-1680

### Belgium

Telephone: 016 402927  
Facsimile: 016 40 2227

### Canada

Telephone: 905-567-0390  
Facsimile: 905-567-0392

### France

Telephone: 01 60916868  
Facsimile: 01 60916869

### Germany

Telephone: +49 (0)6151 3621-0  
Facsimile: +49 (0)6151 3621-52

### Italy

Telephone: 02 924 5518  
Facsimile: 02 923 2448

### Netherlands

Telephone: +31 (0)30 65 92111  
Facsimile: +31 (0)30 65 92120

### Switzerland

Telephone: 01-744-50-70  
Facsimile: 01-744-50-77

### Taiwan

Telephone: 886 (2) 2769-9796  
Facsimile: 886 (2) 2769-9638

### United Kingdom

Telephone: 01635 521757  
Facsimile: 01635 521348



**Newport®**

Printed in the USA on recycled paper