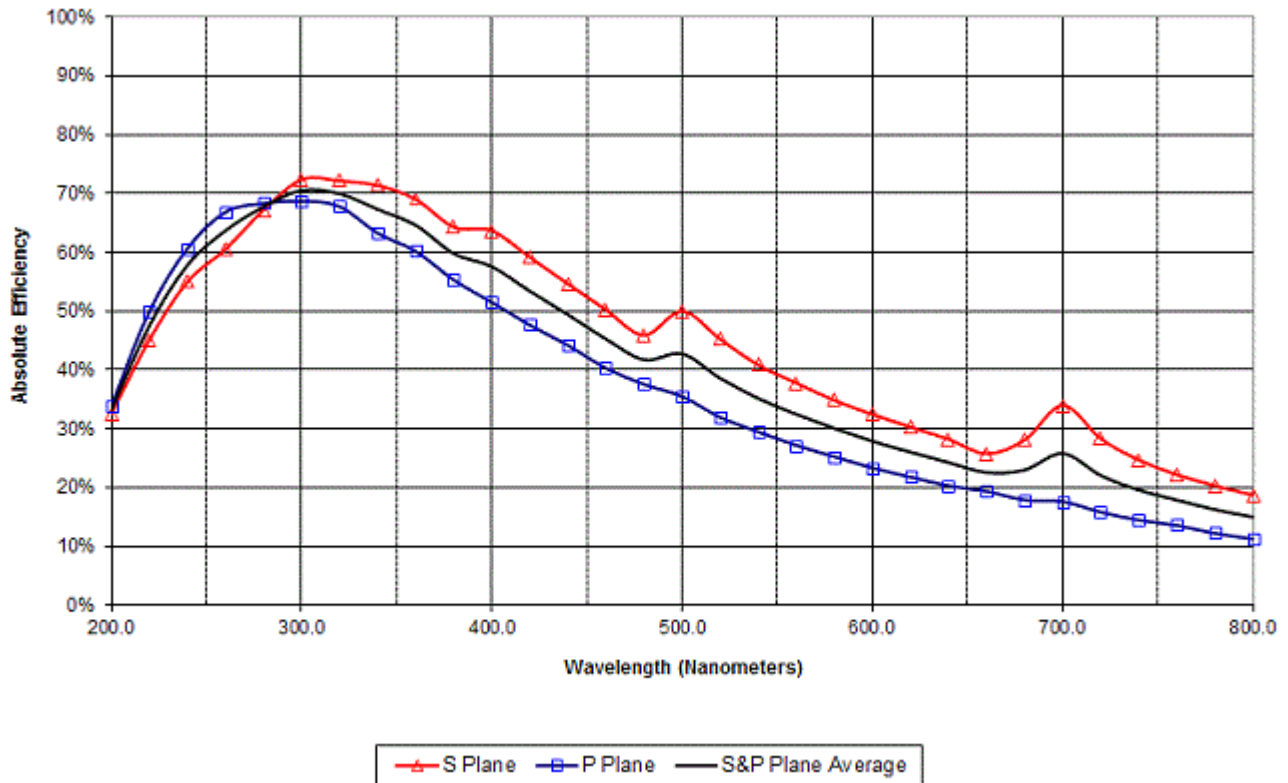


DIFFRACTION GRATING SPECIFICATION SHEET

Catalog no.	53-*-010R	3/10/2020
Grating Description	600 g/mm plane ruled reflection grating with 5.2° nominal blaze angle	
Master no.	1092	
Maximum Ruled Area:		groove length
		ruled width:
		154 mm
		206 mm

Efficiency Curve	spectral order:	m = 1	polarization(s):	S, P & Average
	Coating:	aluminum		
Remarks:	Measured under near Littrow conditions on the AEC.			



Note: The efficiency curve above is absolute and was measured in an in-plane near Littrow configuration (unless otherwise indicated). Efficiency curves are only representative: actual efficiency may vary significantly depending on use geometry and measurement technique. This efficiency curve is for master 1092; two masters with the same catalog number may have different efficiency curves. The uncertainty band on the data in the above efficiency curve(s) is +/- three percentage points.