

# MKS GUI's and Microsoft.NET Framework 3.5 SP1

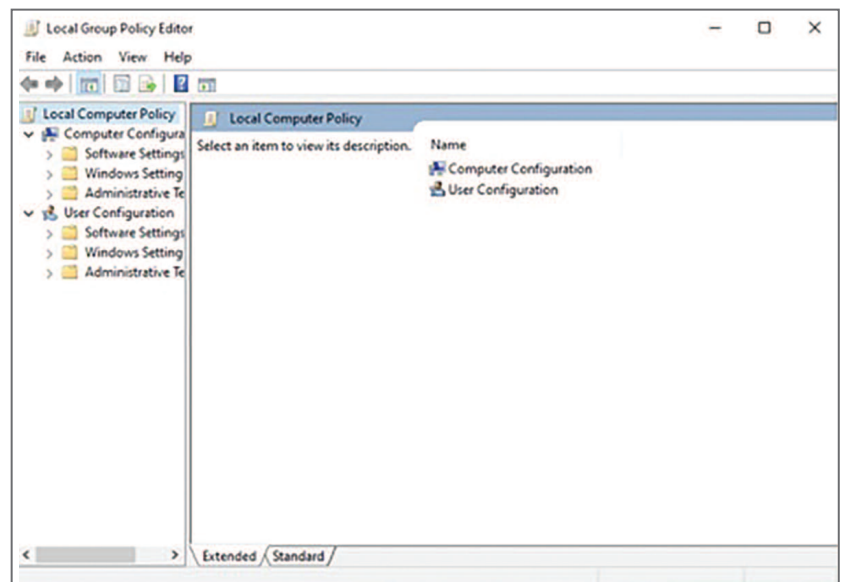
## Introduction

Some GUI's provided for free with MKS Newport motion controllers require Microsoft .NET Framework 3.5 SP1 in order to install and function properly.

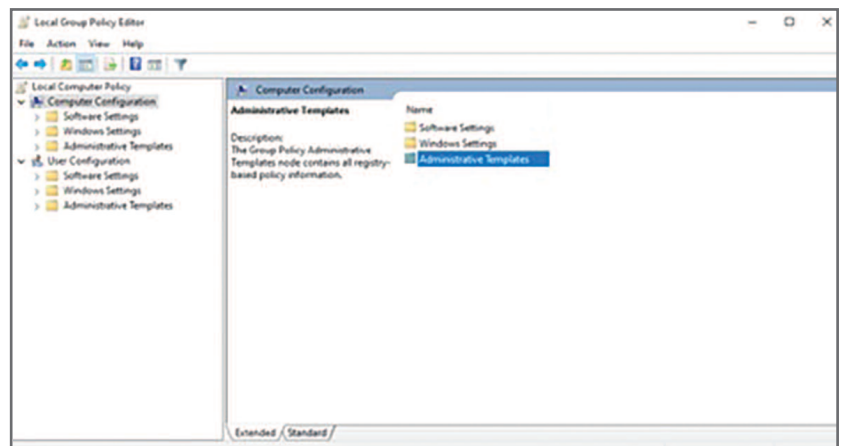
If you are running Win 10 machine and do not have Microsoft .NET Framework 3.5 SP1 already installed, you may need to work with your IT department to get this done.

In case if there is no IT support or the company allows computer settings modification, the following steps can be taken to allow Microsoft .NET Framework 3.5 SP1 installation:

### 1. Open local GP "gpedit.msc"



### 2. Go to Computer Configuration > Policies > Administrative Templates > System



3. Open “Specify settings for optional component installation” > make sure it’s “Enabled” > check the “Download repair content and optional features directly from Windows update instead of WSUS” box

