



DL Controller Series

Single-Axis Motion Controller for Delay Line Stages



 **Newport**[®]

**USB Driver
Installation Manual**

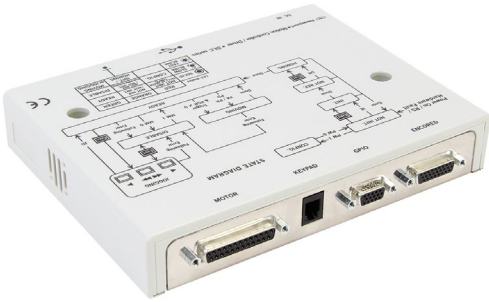
©2018 by Newport Corporation, Irvine, CA. All rights reserved.

Original instructions.

No part of this document may be reproduced or copied without the prior written approval of Newport Corporation. This document is provided for information only, and product specifications are subject to change without notice. Any change will be reflected in future publishings.

Table of Contents

1.0 Introduction	1
2.0 Windows 7 Installation.....	2
3.0 Windows 8.1 Installation.....	6
4.0 Windows 10 Installation.....	10
4.1 Windows 10 Generic Driver	10
Service Form	11



Single-Axis Motion Controller for Delay Line Stages DL Controller

1.0 Introduction

The DL controller uses the “Communications and CDC Control” USB-IF class. The driver for this USB class is included in windows but a custom file .inf is needed for windows 7 and 8. In Windows 10, a new INF, Usbser.inf, has been added that loads Usbser.sys automatically as the function driver.

We do not manage the automatic installation of the .inf file on your PC, but the files exist on CD, in the folder: DL Controller\USB driver

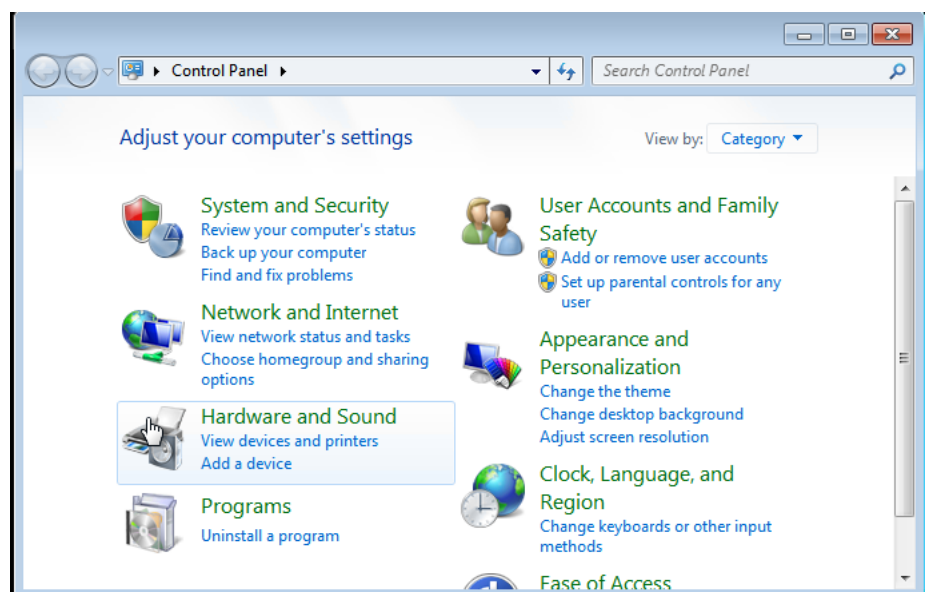
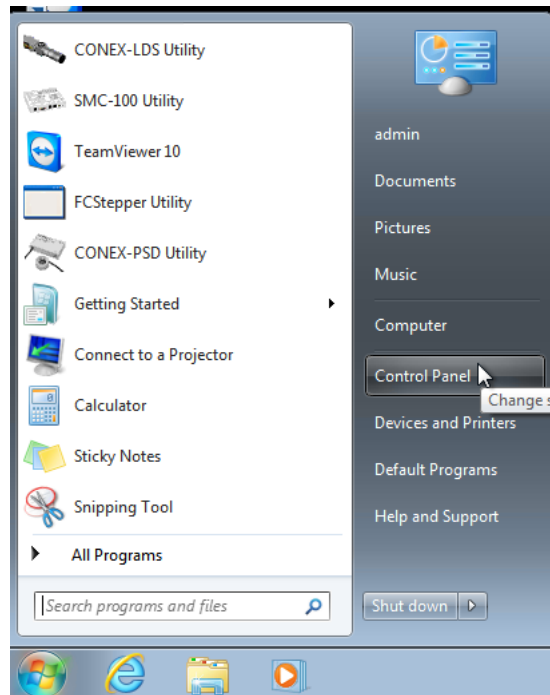
Please follow this note to install your USB driver.

2.0 Windows 7 Installation

Create a new folder on your computer then copy the driver files below from the “DLController Series” CD to this folder:

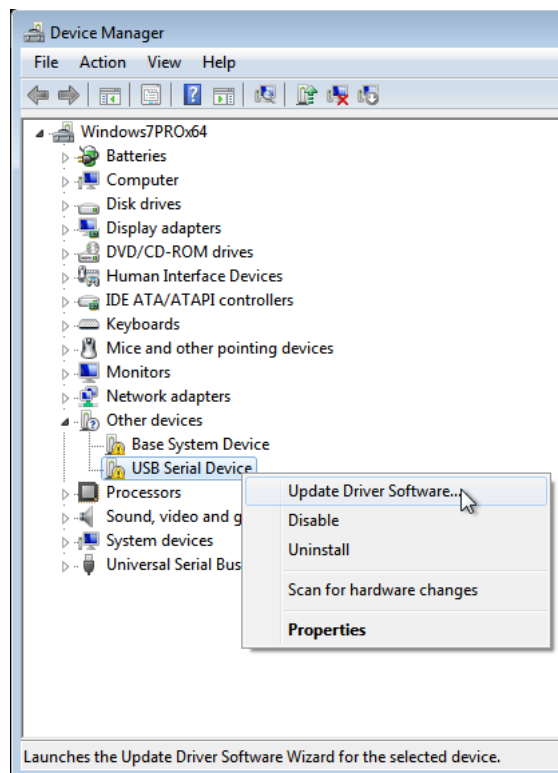
- usb_dev_serial.inf
- usb_dev_serial_amd64.cat
- usb_dev_serial_x86.cat

Connect the DL controller on an USB port on open the device manager from the control panel.

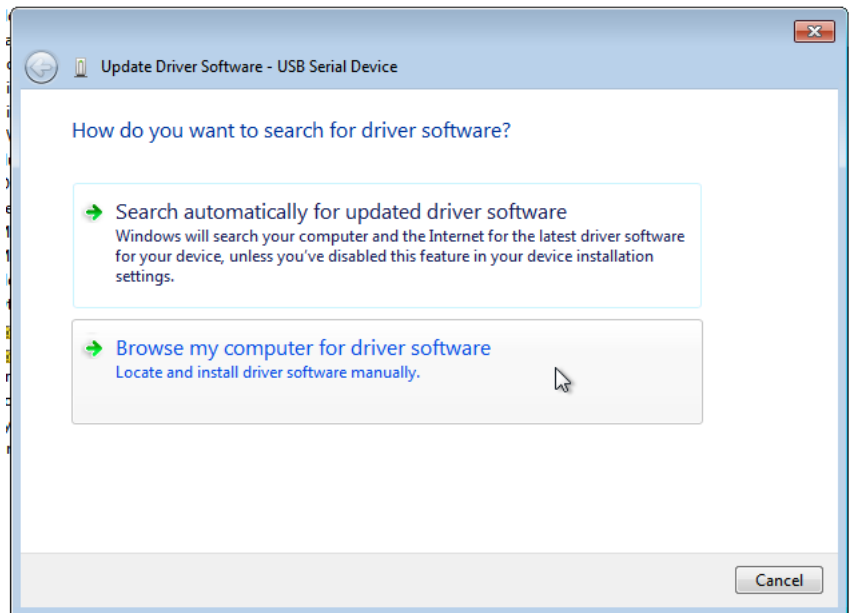




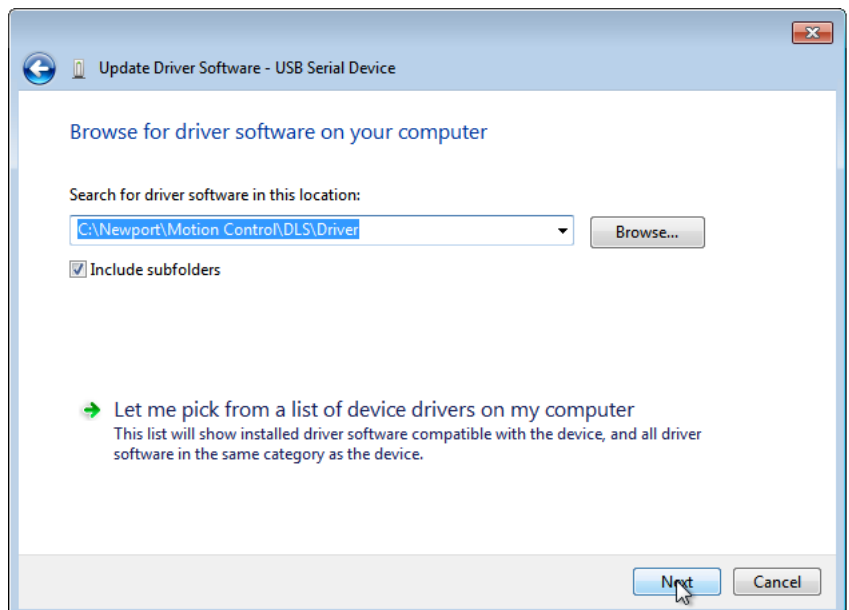
The DL controller is detected as « USB Serial Device » but has no COM port. Right click on the “USB Serial Device” and select “Update Driver Software”.



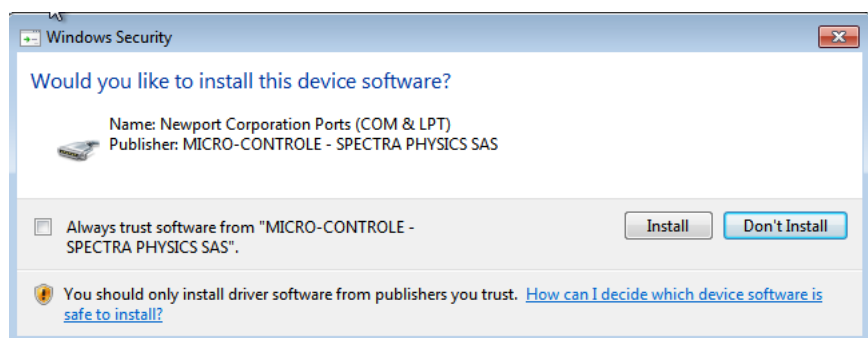
Select “Browse my computer for driver software”, select the folder where the custom .inf and the associated .cat files are located, and click “Next”.



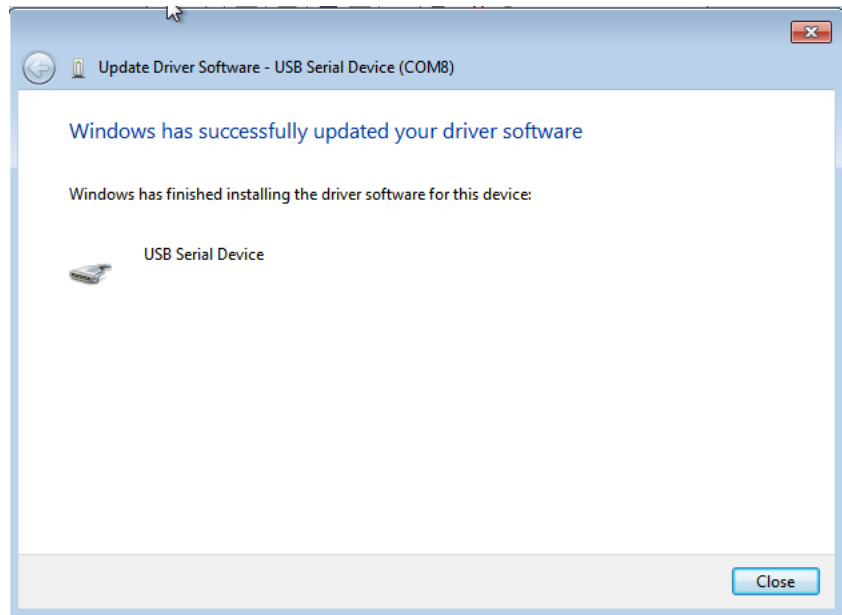
Brows the driver folder on your computer.



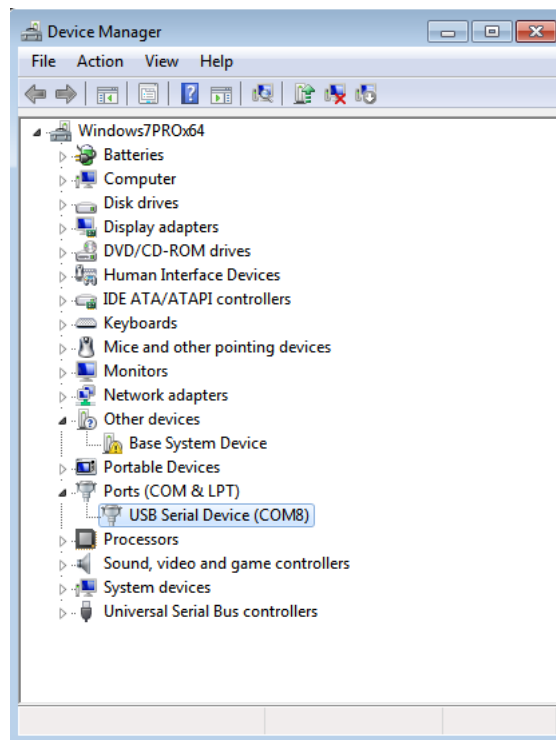
Click on the « Install » Button.



The driver is now installed. Click on “Close” button.



The DL Controller have now a COM port and is ready to use.

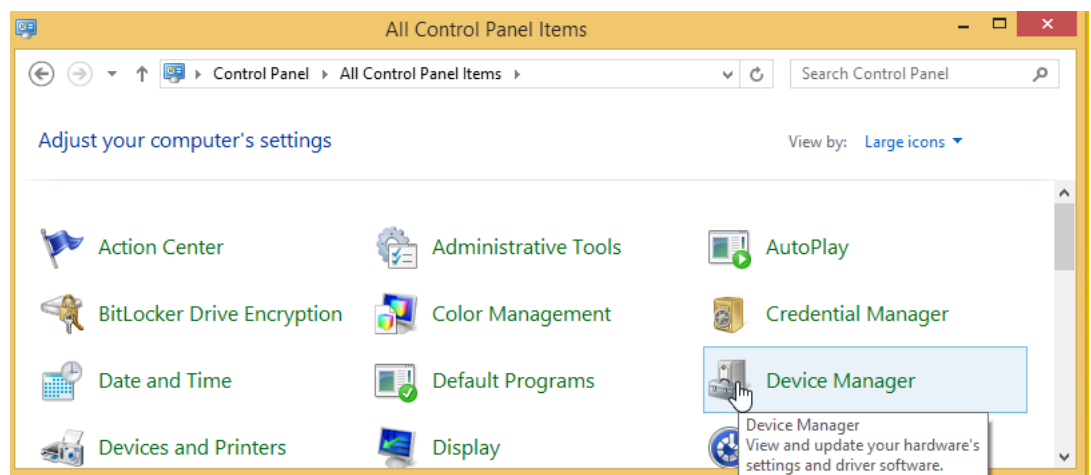
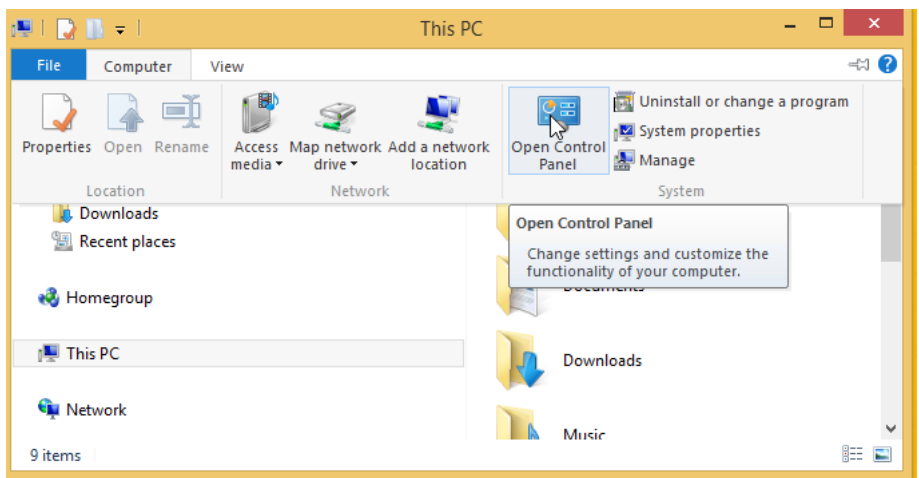
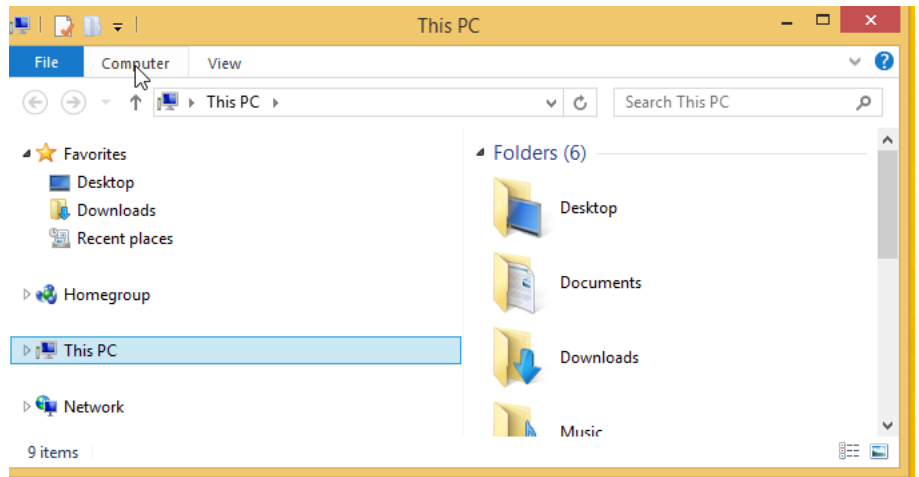


3.0 Windows 8.1 Installation

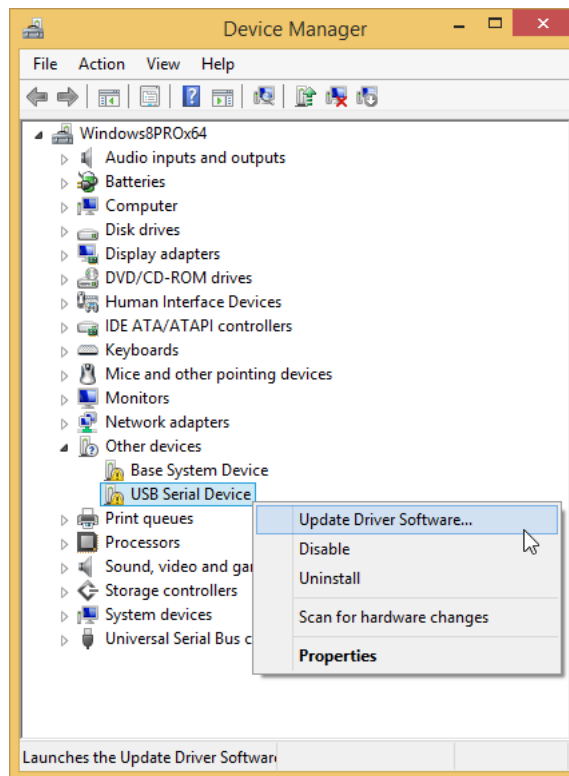
Create a new folder on your computer then copy the driver files below from the “DLController Series” CD to this folder:

- usb_dev_serial.inf
- usb_dev_serial_amd64.cat
- usb_dev_serial_x86.cat

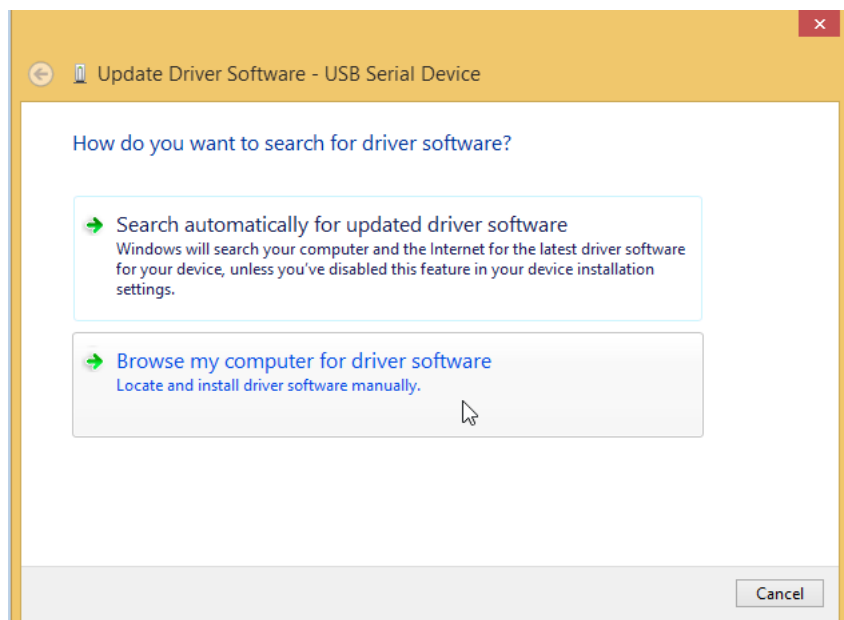
Connect the DL controller on an USB port on open the device manager from the control panel.



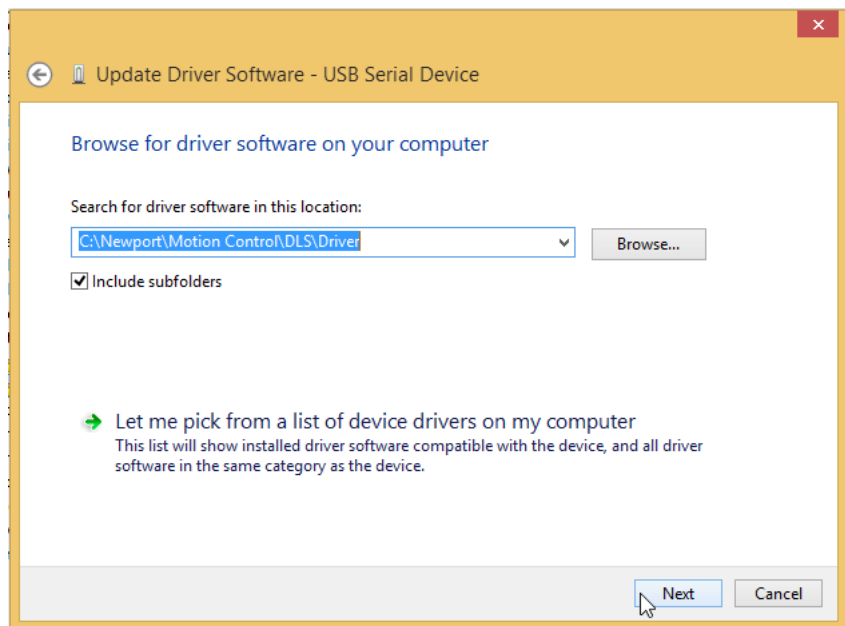
The DL controller is detected as « Newport Virtual COM » but has no COM port. Right click on the “Newport Virtual COM” and select “Update Driver Software”.



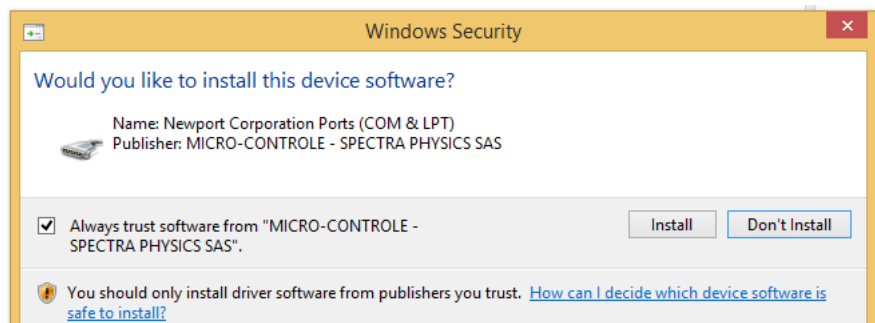
Select “Browse my computer for driver software”, select the folder where the custom .inf and the associated .cat files are located, and click “Next”.



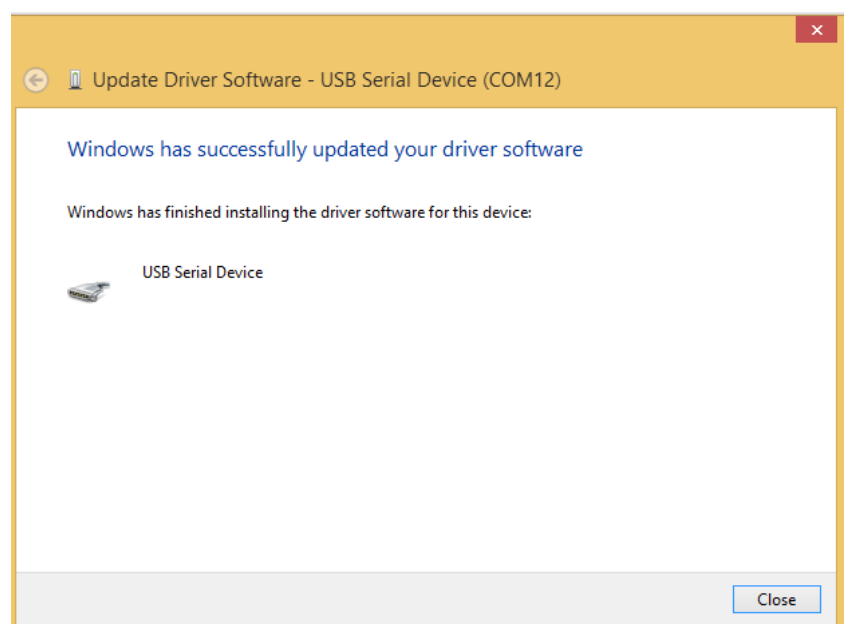
Brows the driver folder on your computer.



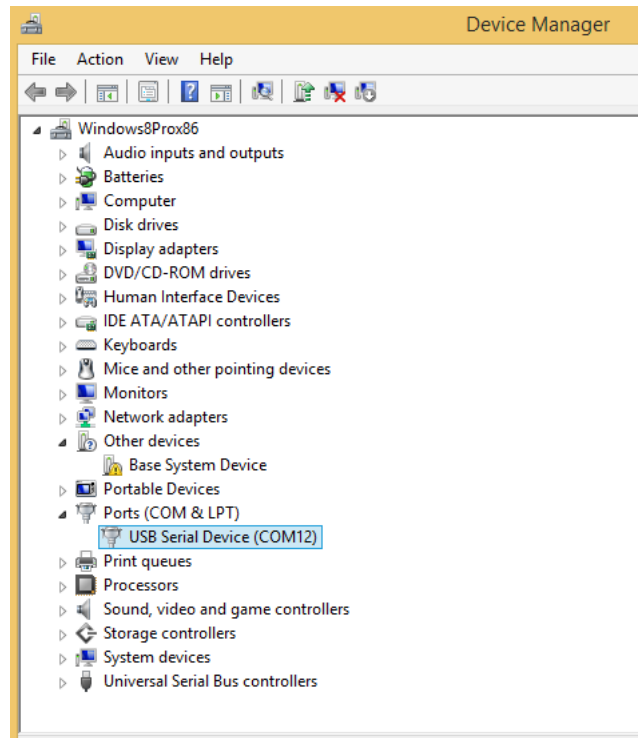
Click on the « Install » Button.



The driver is now installed. Click on “Close” button.



The DL Controller have now a COM port and is ready to use.

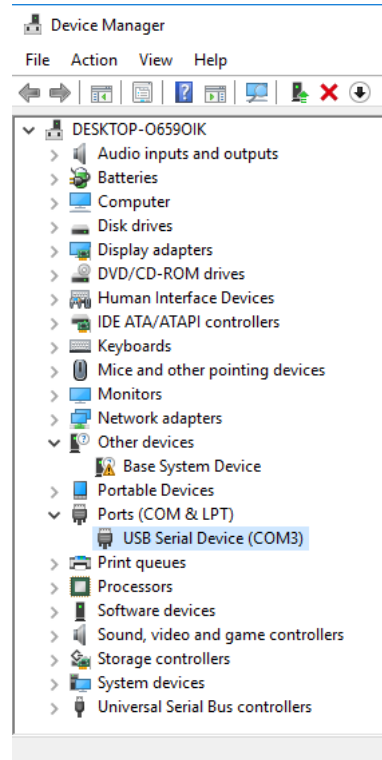


4.0 Windows 10 Installation

4.1 Windows 10 Generic Driver

In Windows 10 a generic driver is automatically installed when you connect the DL Controller.

You can use the COM port attributed by this generic driver without need of installing the Newport custom .inf file.





Visit Newport Online at:
www.newport.com

North America & Asia

Newport Corporation
1791 Deere Ave.
Irvine, CA 92606, USA

Sales

Tel.: (800) 222-6440
e-mail: sales@newport.com

Technical Support

Tel.: (800) 222-6440
e-mail: tech@newport.com

Service, RMAs & Returns

Tel.: (800) 222-6440
e-mail: service@newport.com

Europe

MICRO-CONTROLE Spectra-Physics S.A.S
9, rue du Bois Sauvage
91055 Évry CEDEX
France

Sales

Tel.: +33 (0)1.60.91.68.68
e-mail: france@newport.com

Technical Support

e-mail: tech_europe@newport.com

Service & Returns

Tel.: +33 (0)2.38.40.51.55

